

Product List 2022

22

Immunoassays
HPLC | LC-MS/MS
Photometry
Molecular Biology

Content

Skeletal System.....	2
Cardiovascular and Renal Systems	5
Gastroenterology / Nutrition.....	8
Oxidative Stress / Preventive Medicine	13
Fertility	16
Oncology	17
Clinical Immunology	19
Complementary Medicine	21
HPLC Applications	24
LC-MS/MS Applications	25
Molecular Biology.....	26
Measurement in dried blood, dried urine and dried fecal samples	30
Assay Register.....	32
Alphanumeric Register	38
List of abbreviations.....	43
Service	43
Ordering information.....	45

Skeletal System

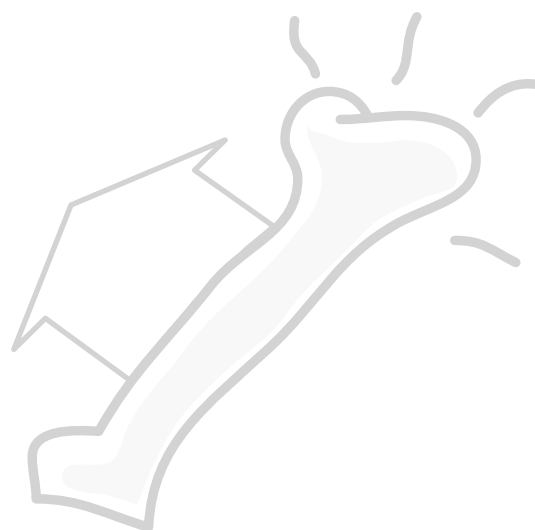
Calcium Metabolism

Bone and Cartilage Metabolism

Muscle Growth

Rheumatology

Osteoporosis



Product*	Cat. No.	Method	Tests	Matrix	CE
Biologic therapy monitoring → IDKmonitor®					
Bone Sialoprotein (BSP)	KR4222	ELISA	96 Tests	Serum, EDTA Plasma	
CRP	K 9710s	ELISA	96 Tests	Plasma, Serum, Urine, Stool, dried blood	✓
CRP (1-point calibration)	K 9720s	ELISA	96 Tests	Plasma, Serum, Urine, Stool, dried blood	✓
Delipidation Kit A	K 1003A		1 (5ml)		
Delipidation Kit B	K 1003B		1 (5ml)		
IDKmonitor® Adalimumab drug level (e.g. Humira®)	K 9657	ELISA	96 Tests	Serum, EDTA Plasma	✓
IDKmonitor® Adalimumab free ADA (antibodies against adalimumab e.g. Humira®)	K 9652	ELISA	96 Tests	Serum, EDTA Plasma	✓
IDKmonitor® Adalimumab total ADA (total antibodies against adalimumab e.g. Humira®)	K 9651	ELISA	96 Tests	Serum, EDTA Plasma	✓
IDKmonitor® Certolizumab drug level (e.g. Cimzia®)	KR9662	ELISA	96 Tests	Serum, EDTA Plasma	
IDKmonitor® Etanercept drug level (e.g. Enbrel®)	K 9646	ELISA	96 Tests	Serum, EDTA Plasma	✓
IDKmonitor® Etanercept free ADA (antibodies against etanercept e.g. Enbrel®)	K 9653	ELISA	96 Tests	Serum, EDTA Plasma	✓
IDKmonitor® Golimumab drug level (e.g. Simponi®)	K 9656	ELISA	96 Tests	Serum, EDTA Plasma	✓
IDKmonitor® Golimumab free ADA (antibodies against golimumab e.g. Simponi®)	K 9649	ELISA	96 Tests	Serum, EDTA Plasma	✓
IDKmonitor® Infliximab drug level (e.g. Remicade®)	K 9655	ELISA	96 Tests	Serum, EDTA Plasma	✓
IDKmonitor® Infliximab free ADA (antibodies against infliximab e.g. Remicade®)	K 9650	ELISA	96 Tests	Serum, EDTA Plasma	✓
IDKmonitor® Infliximab total ADA (total antibodies against infliximab e.g. Remicade®)	K 9654	ELISA	96 Tests	Serum, EDTA Plasma	✓
IDKmonitor® Rituximab drug level (e.g. MabThera®)	K 9661	ELISA	96 Tests	Serum, EDTA Plasma	✓
IDK® total α-Klotho	KR1700	ELISA	96 Tests	Serum	



Product*	Cat. No.	Method	Tests	Matrix	CE
MutaPLATE® VDR3/Bsm1 (TM)	KF1900496	real time PCR (open systems)	96 Tests	DNA (e.g. whole blood, cheek swab)	✓
Myostatin	KR1012	ELISA	96 Tests	Serum, Plasma	
Osteonectin (ON)	KR4231	ELISA	96 Tests	Serum	
IDK® Osteopontin	KR4235	ELISA	96 Tests	Plasma, Serum, Breast Milk	
Osteoprotegerin (OPG)	KR1011	EIA	96 Tests	Serum, EDTA Plasma, Heparin Plasma, Citrate Plasma	
Osteoprotegerin Mouse/Rat	KR1020	ELISA	96 Tests	Plasma, Serum, Urine, Cell Culture Supernatant	
Paratrin ProLife®	KR1548	ELISA	96 Tests	Serum	
sRANKL Mouse/Rat	K 1019	ELISA	96 Tests	Serum, Cell Culture Supernatant	
total sRANKL	K 1016	ELISA	96 Tests	Serum, Plasma	✓
anti-human epidermal Transglutaminase IgA (anti-heTG IgA)	K 9396	ELISA	96 Tests	Serum, Plasma	✓
anti-human tissue Transglutaminase IgA (anti-htTG IgA)	K 9399	ELISA	96 Tests	Serum, Plasma	✓
anti-human tissue Transglutaminase sIgA (anti-htTG sIgA)	K 9393	ELISA	96 Tests	Stool	✓
TNFα blocker monitoring → IDKmonitor®					
IDK® TNF α (Tumor Necrosis Factor α)	K 9610	ELISA	96 Tests	Serum, Cell Culture Supernatant, Plasma, Stool	✓
1,25-(OH) ₂ -Vitamin D	K 2112	ELISA	48 Tests	Serum, Plasma	✓
1,25-(OH) ₂ -Vitamin D ₃ /D ₂ ImmuTube® LC-MS/MS Kit	KM1000	LC-MS/MS	50 Tests	Serum, Plasma	✓
1,25-(OH) ₂ -Vitamin D ₃ /D ₂ ImmuTube® Extraction Kit	KM1100	Extraction	50 Samples	Serum, Plasma	✓
1,25-(OH) ₂ -Vitamin D Columns	Se2112				
1,25-(OH) ₂ -Vitamin D Nitrogen Distributor	K 2221sv				
1,25-(OH) ₂ -Vitamin D Nitrogen Distributor (separately)	K 2221svez				
1,25-(OH) ₂ -Vitamin D Extraction Rack (consisting of 3 parts)	K 2221extr				
1,25-(OH) ₂ -Vitamin D Silicia Cartridges	Sb2221				
25-OH-Vitamin D	K 2020	ELISA	96 Tests	Serum	
25-OH-Vitamin D ₃ / D ₂ Reversed Phase	KC3000	HPLC	100 Tests	Serum, Plasma	✓
Vitamin D binding Protein (VDBP)	K 2314	ELISA	96 Tests	Plasma, Serum, Urine	✓
ImmuTube® Vitamin D duo LC-MS/MS Kit for the determination of 24,25-dihydroxyvitamin D ₃ and 25-hydroxyvitamin D ₃ /D ₂	KM1310	LC-MS/MS	50 Tests	Serum, Plasma	✓
ImmuTube® Vitamin D duo LC-MS/MS Extraction kit	KM1311	LC-MS/MS	50 samples	Serum, Plasma	✓



Product*	Cat. No.	Method	Tests	Matrix	CE
IDKmagnetics® Vitamin D duo LC-MS/MS Kit for the determination of 24,25-dihydroxyvitamin D ₃ and 25-hydroxyvitamin D ₃ /D ₂	KM1320	LC-MS/MS	96 Tests	Serum, Plasma	✓
IDKmagnetics® Vitamin D duo LC-MS/MS Extraction kit	KM1321	LC-MS/MS	96 samples	Serum, Plasma	✓
Vitamin K₁ (Phylloquinone)	KC2400	HPLC	100 Tests	Plasma, Serum	✓

*US: all products: Research Use Only. Not for use in diagnostic procedures.

Cardiovascular and Renal Systems

Metabolic Syndrome / Diabetes

Arteriosclerosis and Vascular Calcification

Acute Coronary Syndrome (ACS) / Myocardial Infarction

Heart Failure

Renal Failure



Product*	Cat. No.	Method	Tests	Matrix	CE
MutaREAL® ACE	KF290096	real time PCR (capillary system)	96 Tests	DNA (e.g. whole blood, cheek swab)	✓
Adiponectin total	K 6250	ELISA	96 Tests	Plasma, Serum	✓
ADMA Xpress	K 7860	ELISA	96 Tests	Serum, EDTA Plasma	✓
ADMA	K 7828	ELISA	96 Tests	Citrate Plasma, Serum, EDTA Plasma	✓
ADMA (Mouse/Rat)	KR3001	ELISA	96 Tests	EDTA Plasma, Serum, Cell culture media	
Advanced oxidation protein products (AOPP) (Microtiter plate)	KR7811w	photometric	96 Tests	EDTA Plasma	
Advanced oxidation protein products (AOPP) (Cuvettes)	K 7811c	photometric	20Tests	EDTA Plasma	
Albumin, human	K 6330	ELISA	96 Tests	Urine, Stool	✓
MutaREAL® ApoE	KF290796	real time PCR (capillary system)	96 Tests	DNA (e.g. whole blood, cheek swab)	✓
IDK® Arginine	KR7733	ELISA	96 Tests	EDTA Plasma	
Carbonyl protein	KR7822	ELISA	96 Tests	Plasma, cellular and extracellular liquids	
Protein quantification test (BCA method)	KR7822BCA				
Centrifugal filtration concentrators	KR7822ZR		100		
Carbonyl protein	K 7870	ELISA	96 Tests	Serum, Plasma	✓
CRP	K 9710s	ELISA	96 Tests	Plasma, Serum, Urine, Stool, dried blood	✓
CRP (1-point calibration)	K 9720s	ELISA	96 Tests	Plasma, Serum, Urine, Stool, dried blood	✓
ID-Vit® Folic acid	KIF005	Direct MTP assay	96 Tests	Serum	✓
Haptoglobin Typing <small>[not available in Portugal and Spain]</small>	KSA71001	ELISA	96 Tests	Serum, Plasma	✓



Product*	Cat. No.	Method	Tests	Matrix	CE
Immunglobulin G (IgG)	K 6510A	ELISA	96 Tests	Plasma, Serum, Urine	✓
IDK® IDO activity	K 7726	ELISA	96 Tests	Serum, EDTA Plasma, dried blood	✓
IDK® total α-Klotho	KR1700	ELISA	96 Tests	Serum	
IDK® Kynurenine	K 7728	ELISA	96 Tests	EDTA Plasma, Serum, dried blood	✓
IDK® Kynurenine high sensitive	KR3728	ELISA	96 Tests	Plasma, Serum, Brain tissue (mouse/rat), Cell Culture Supernatant, CSF	
α_2-Macroglobulin (α_2-M)	K 6610A	ELISA	96 Tests	Plasma, Serum, Urine	✓
α_1-Microglobulin (α_1-M)	K 6710	ELISA	96 Tests	Plasma, Serum, Urine	✓
β_2-Microglobulin (β_2-M)	K 6210	ELISA	96 Tests	Plasma, Serum, Urine	✓
MutaPLATE® MTHFR (TM)	KF1901496	<i>real time</i> PCR (open systems)	96 Tests	DNA (e.g. whole blood, cheek swab)	✓
IDK® Myeloperoxidase (MPO)	K 6631B	ELISA	96 Tests	Serum, Plasma	✓
ID-Vit® Niacin	KIF003	Direct MTP assay	96 Tests	Serum	✓
Nitrotyrosine	K 7824	ELISA	96 Tests	Stool, EDTA Plasma, Serum	✓
Nitrotyrosine	K 7829	ELISA	96 Tests	EDTA Plasma, Serum, dried blood	✓
Osteoprotegerin (OPG)	KR1011	EIA	96 Tests	Serum, EDTA Plasma, Heparin Plasma, Citrate Plasma	
Osteoprotegerin Mouse/Rat	KR1020	ELISA	96 Tests	Plasma, Serum, Urine, Cell Culture Supernatant	
ox-LDL/MDA Adduct <small>in US: FDA Class I Exempt Device. For In Vitro Diagnostic Use.</small>	K 7810	ELISA	96 Tests	EDTA Plasma, Serum, dried blood	✓
ox-LDL Autoantibody (anti ox-LDL)	K 7809	ELISA	96 Tests	EDTA Plasma, Serum	✓
Paratrin ProLife®	KR1548	ELISA	96 Tests	Serum	
sRANKL Mouse/Rat	K 1019	ELISA	96 Tests	Serum, Cell Culture Supernatant	
total sRANKL	K 1016	ELISA	96 Tests	Serum, Plasma	✓
Relaxin	K 9210	ELISA	96 Tests	Serum, Urine, Seminal plasma, Tissue, Plasma	✓
Resistin	on request				
Retinol-binding protein RBP/RBP4	K 6110	ELISA	96 Tests	Plasma, Serum, Urine	✓
Retinol-binding protein RBP/RBP4 (1-point calibration)	K 6120	ELISA	96 Tests	Plasma, Serum, Urine	✓
S100A8/A9 MRP8/14, Calprotectin (Mouse/Rat)	KR6936	ELISA	96 Tests	Plasma, Serum, Urine, Cell Culture Supernatant, Stool	
SDMA	K 7780	ELISA	96 Tests	EDTA plasma, Serum, Li-heparin plasma (human, canine, feline)	✓
Urotensin II	on request				
Vitamin A/E <small>(Retinol / Tocopherol)</small>	KC1600	HPLC	100 Tests	Serum, Plasma	✓
ID-Vit® Vitamin B₁	KIF001	Direct MTP assay	96 Tests	Whole blood	✓
Vitamin B₁ <small>(Thiaminpyrophosphate)</small>	KC2201	HPLC	100 Tests	EDTA-Whole blood	✓



Product*	Cat. No.	Method	Tests	Matrix	CE
<i>ID-Vit</i> [®] Vitamin B ₆	KIF006	Direct MTP assay	96 Tests	Serum	✓
Vitamin B₆ (Pyridoxal-5-Phosphate)	KC2100	HPLC	100 Tests	Plasma, Serum	✓
Vitamin B₆ (Pyridoxal-5-Phosphate)	KC2150	HPLC	100 Tests	Plasma, Serum, EDTA whole-blood	✓
<i>ID-Vit</i> [®] Vitamin B ₁₂	KIF012	Direct MTP assay	96 Tests	Serum	✓
Vitamin C (Ascorbic acid)	KC2900	HPLC	100 Tests	Li-Heparin Plasma	✓
<i>IDK</i> [®] Vitamin C	K 4000	colorimetric	96 Tests	Li-Heparin Plasma, Serum, Urine	✓
<i>IDK</i> [®] Zonulin	K 5600	ELISA	96 Tests	Stool	✓
<i>IDK</i> [®] Zonulin	K 5601	ELISA	96 Tests	Serum	✓

*US: all products: Research Use Only. Not for use in diagnostic procedures.

Gastroenterology / Nutrition

Colorectal Cancer Prevention

Inflammatory Bowel Diseases / Intestinal Barriers Status

Food Intolerance / Nutrition

Infectious Diseases

Exocrine Pancreas Function



Product*	Cat. No.	Method	Tests	Matrix	CE
MutaPLEX® AKM/FAEP (<i>Akkermansia muciniphila</i> + <i>Faecalibacterium prausnitzii</i>)	KG1911-96	<i>real time</i> PCR (open systems) (+ extraction control)	96 Tests	DNA (e.g. clinical samples)	✓
IDK® Prealbumin (Transthyretin)	K 6331	ELISA	96 Tests	Serum, Plasma, Urine, Stool	✓
Albumin, human	K 6330	ELISA	96 Tests	Urine, Stool	✓
MutaPLATE® Aldolase B (TM)	KF190496	<i>real time</i> PCR (open systems)	96 Tests	DNA (e.g. whole blood, cheek swab)	✓
MutaPLATE® Aldolase B (A174D)	KF190496-B	<i>real time</i> PCR (open systems)	96 Tests	DNA (e.g. whole blood, cheek swab)	✓
IDK® α₁-Antitrypsin (Alpha-1-Proteinase-Inhibitor)	K 6750	ELISA	96 Tests	Stool	✓
IDK® α₁-Antitrypsin (1-point calibration)	K 6760	ELISA	96 Tests	Stool	✓
IDK® α₁-Antitrypsin Clearance	K 6752	ELISA	96 Tests	Stool, Plasma, Serum	✓
IDK® Bile Acids (Stool)	K 7878W	photometric	96 Tests	Stool	✓
IDK® Bile Acids (Stool) (<i>Cuvette version</i>)	K 7878CV	photometric	40 Tests	Stool	✓
IDK® Bile Acids (Serum) (<i>DSX version</i>)	K 7878DX	photometric	96 Tests	Stool	✓
IDK® Bile Acids (Serum)	K 7877W	photometric	96 Tests	Serum	✓
IDK® Bile Acids (Serum) (<i>Cuvette version</i>)	K 7877CV	photometric	40 Tests	Serum	✓
Biologic therapy monitoring → IDKmonitor®					
IDK® Biotin (vitamin H)	K 8141	ELISA	96 Tests	Serum, Plasma, Urine, Milk	✓
IDK® S100A12 (Calgranulin C, EN-RAGE)	K 6938	ELISA	96 Tests	Stool	✓
IDK® S100A12 (Calgranulin C, EN-RAGE)	K 6939	ELISA	96 Tests	Serum	✓
IDK® Calprotectin (MRP 8/14)	K 6928	ELISA	96 Tests	Urine	✓
IDK® Calprotectin (MRP 8/14)	K 6935	ELISA	96 Tests	Serum, Plasma	✓
IDK® Calprotectin (MRP 8/14)	K 6927	ELISA	96 Tests	Stool, dried fecal extract	✓
IDK® Calprotectin (MRP 8/14) (1-point calibration)	K 6967	ELISA	96 Tests	Stool	✓
S100A8/A9 MRP8/14, Calprotectin (Mouse/Rat)	KR6936	ELISA	96 Tests	Plasma, Serum, Urine, Cell Culture Supernatant, Stool	



Product*	Cat. No.	Method	Tests	Matrix	CE
IDK® Casomorphin/Gliadorphin Peptides	KM8000	LC-MS/MS	100 Tests	Stabilized Urine	✓
Chymotrypsin activity	K 6990	photometric	20 Tests	Stool	✓
CRP	K 9710s	ELISA	96 Tests	Plasma, Serum, Urine, Stool, dried blood	✓
CRP (1-point calibration)	K 9720s	ELISA	96 Tests	Plasma, Serum, Urine, Stool, dried blood	✓
β-Defensin 2	K 6500	ELISA	96 Tests	Stool	✓
IDK® Diamine Oxidase (DAO)	K 8500	ELISA	96 Tests	Serum, dried blood	✓
IDK® Diamine Oxidase (DAO) (1-point-calibration)	K 8510	ELISA	96 Tests	Serum, dried blood	✓
IDK® EDN (Eosinophil-derived Neurotoxin)	K 6811	ELISA	96 Tests	Serum, Urine, Plasma, Stool	✓
IDK® EDN (1-point-calibration)	K 6821	ELISA	96 Tests	Serum, Urine, Plasma, Stool	✓
MutaPLEX® Enterovirus	KG190296	<i>real time</i> RT-PCR (open systems) (+ extraction control)	96 Tests	RNA (e.g. biological liquids)	✓
MutaPLEX® EU/BAC/BIF (Eubacterium + Bacteroides + Bifidobacteria)	KG1912-96	<i>real time</i> PCR (open systems) (+ extraction control)	96 Tests	DNA (e.g. clinical samples)	✓
IDK® FABP2 (Fatty acid protein 2)	KR6809	ELISA	96 Tests	Serum, Plasma	
GABA	K 7009	ELISA	96 Tests	Stool	✓
MutaCHIP® GASTRO (human gastroenteritis pathogens)	KFR390015 KFR390115 KFR390315	Gene-Chip with MAAT reader system	20 Chips 100 Chips 300 Chips	DNA (clinical samples)	
MutaPLEX® GastroSys 1 Multiplex panel: adenovirus, norovirus, rotavirus	KG198696	<i>real time</i> RT-PCR (open systems) (+ extraction control)	96 Tests	RNA (clinical, environmental and food samples)	✓
MutaPLEX® GastroSys 3 Multiplex panel: astrovirus, sapovirus, adenovirus, norovirus G-I, norovirus G-II, rotavirus	KG198896	<i>real time</i> RT-PCR (open systems) (+ extraction control)	96 Tests	RNA (clinical, environmental and food samples)	✓
MutaPLEX® GastroSys 4 Multiplex panel: campylobacter, salmonella, shigella, yersinia	KG1920-96	<i>real time</i> PCR (open systems) (+ extraction control)	96 Tests	DNA (clinical specimens, stool)	✓
anti-Gliadin sIgA	K 9311	ELISA	96 Tests	Stool	✓
IDK® Hemoglobin, human (Hb)	K 7816D	ELISA	96 Tests	Stool	✓
IDK® Hemoglobin, human (1-point calibration)	K 7836D	ELISA	96 Tests	Stool	✓
IDK® Hemoglobin-Haptoglobin-Complex (Hb-Hp-Complex)	K 7817D	ELISA	96 Tests	Stool	✓
IDK® Hemoglobin-Haptoglobin-Complex (1-point calibration)	K 7837D	ELISA	96 Tests	Stool	✓
IDK® Helicobacter pylori Antigen	K 6923	ELISA	96 Tests	Stool	✓
MutaREAL® HFE	KF291096	<i>real time</i> PCR (capillary system)	96 Tests	DNA (e.g. whole blood, cheek swab)	✓
Histamine	K 8212	ELISA	96 Tests	EDTA Plasma, Urine, dried blood	✓
Histamine	K 8213	ELISA	96 Tests	Stool	✓
IDKmonitor® Adalimumab drug level (e.g. Humira®)	K 9657	ELISA	96 Tests	Serum, EDTA Plasma	✓
IDKmonitor® Adalimumab free ADA (antibodies against adalimumab e.g. Humira®)	K 9652	ELISA	96 Tests	Serum, EDTA Plasma	✓
IDKmonitor® Adalimumab total ADA (total antibodies against adalimumab e.g. Humira®)	K 9651	ELISA	96 Tests	Serum, EDTA Plasma	✓
IDKmonitor® Certolizumab drug level (e.g. Cimzia®)	KR9662	ELISA	96 Tests	Serum, EDTA Plasma	
IDKmonitor® Golimumab drug level (e.g. Simponi®)	K 9656	ELISA	96 Tests	Serum, EDTA Plasma	✓
IDKmonitor® Golimumab free ADA (antibodies against golimumab e.g. Simponi®)	K 9649	ELISA	96 Tests	Serum, EDTA Plasma	✓
IDKmonitor® Infliximab drug level (e.g. Remicade®)	K 9655	ELISA	96 Tests	Serum, EDTA Plasma	✓



Product*	Cat. No.	Method	Tests	Matrix	CE
IDKmonitor® Infliximab free ADA (antibodies against infliximab e.g. Remicade®)	K 9650	ELISA	96 Tests	Serum, EDTA Plasma	✓
IDKmonitor® Infliximab total ADA (total antibodies against infliximab e.g. Remicade®)	K 9654	ELISA	96 Tests	Serum, EDTA Plasma	✓
IDKmonitor® Ustekinumab drug level (e.g. Stelara®)	K 9660	ELISA	96 Tests	Serum, EDTA Plasma	✓
IDKmonitor® Ustekinumab free ADA (antibodies against ustekinumab e.g. Stelara®)	K 9666	ELISA	96 Tests	Serum, EDTA Plasma	✓
IDKmonitor® Ustekinumab total ADA (total antibodies against ustekinumab e.g. Stelara®)	K 9667	ELISA	96 Tests	Serum, EDTA Plasma	✓
IDKmonitor® Vedolizumab drug level (e.g. Entyvio®)	K 9658	ELISA	96 Tests	Serum, EDTA Plasma	✓
IDKmonitor® Vedolizumab drug level (e.g. Entyvio®)	KM9600	LC-MS/MS	50 Tests	Serum, EDTA Plasma	
IDKmonitor® Vedolizumab free ADA (antibodies against vedolizumab e.g. Entyvio®)	K 9648	ELISA	96 Tests	Serum, EDTA Plasma	✓
IDK® sIgA (secretory Immunglobulin A) in US: FDA Class I Exempt Device. For In Vitro Diagnostic Use.	K 8870	ELISA	96 Tests	Saliva, Stool	✓
IDK® sIgA (1-point calibration)	K 8880	ELISA	96 Tests	Saliva, Stool	✓
Lactoferrin	K 6870	ELISA	96 Tests	Stool	✓
MutaPLATE® Laktase (TM)	KF1907296	<i>real time</i> PCR (open systems)	96 Tests	DNA (e.g. whole blood, cheek swab)	✓
Lysozyme	K 6900	ELISA	96 Tests	Stool	✓
Lysozyme (1-point calibration)	K 6901	ELISA	96 Tests	Stool	✓
Lysozyme	K 6902	ELISA	96 Tests	Serum, Urine, Liquor	✓
Lysozyme (1-point calibration)	K 6903	ELISA	96 Tests	Serum, Urine, Liquor	✓
MutaPLEX® MTB (Mycobacterium tuberculosis)	KG190796	<i>real time</i> PCR (open systems) (+ extraction control)	96 Tests	DNA (e.g. clinical specimen)	✓
MutaPLEX® MTB/NTM/MAC	KG190896	<i>real time</i> PCR (open systems) (+ extraction control)	96 Tests	DNA (clinical specimen)	✓
IDK® Myeloperoxidase (MPO)	K 6630	ELISA	96 Tests	Urine, Stool	✓
IDK® Myeloperoxidase (MPO)	K 6631B	ELISA	96 Tests	Serum, Plasma	✓
MutaPLEX® Norovirus	KG190196	<i>real time</i> RT-PCR (open systems) (+ extraction control)	96 Tests	RNA (Stool)	✓
IDK® Oncostatin M	KR6926	ELISA	96 Tests	Serum, Plasma, Stool	
Pancreatic Amylase	K 6410	ELISA	96 Tests	Serum, Stool	✓
IDK® Pancreatic Elastase in US: FDA Class I Exempt Device. For In Vitro Diagnostic Use.	K 6915	ELISA	96 Tests	Stool, dried fecal extract	✓
Pantothenic acid, ID- Vit®	KIF004	Direct MTP assay	96 Tests	Serum	✓
IDK® PMN-Elastase	K 6840	ELISA	96 Tests	Stool	✓
IDK® PMN-Elastase (1-point calibration)	K 6830	ELISA	96 Tests	Stool	✓
IDK® PMN-Elastase	K 6841	ELISA	96 Tests	Serum, Plasma, Seminal Plasma	✓
IDK® PMN-Elastase (1-point calibration)	K 6831	ELISA	96 Tests	Serum, Plasma, Seminal Plasma	✓
MutaPLEX® PRE/RU/LA (Prevotella + Ruminococcus + Lachnospiraceae)	KG1913-96	<i>real time</i> PCR (open systems) (+ extraction control)	96 Tests	DNA (e.g. clinical samples)	✓



Product*	Cat. No.	Method	Tests	Matrix	CE
Resistin	on request				
IDK® Serotonin	K 6881	ELISA	96 Tests	Stool	✓
IDK® Serotonin	K 6880	ELISA	96 Tests	Serum, dried blood	✓
anti-human tissue Transglutaminase sIgA (anti-htTG sIgA)	K 9393	ELISA	96 Tests	Stool	✓
anti-human epidermal Transglutaminase IgA (anti-heTG IgA)	K 9396	ELISA	96 Tests	Serum, Plasma	✓
anti-human tissue Transglutaminase IgA (anti-htTG IgA)	K 9399	ELISA	96 Tests	Serum, Plasma	✓
IDK® anti-human neuronal Transglutaminase IgA (anti-hnTG IgA anti-TG6 IgA)	K 9400	ELISA	96 Tests	Serum, Plasma	✓
IDK® anti-human neuronal Transglutaminase IgG (anti-hnTG IgG anti-TG6 IgG)	K 9401	ELISA	96 Tests	Serum, Plasma	✓
TNFα blocker monitoring → IDKmonitor®					
IDK® TNFα (Tumor Necrosis Factor α)	K 9610	ELISA	96 Tests	Serum, Cell Culture Supernatant, Plasma, stool	✓
IDK® Tryptase	KR6814	ELISA	96 Tests	Serum	
IDK® Tryptophan	K 7729	ELISA	96 Tests	Stool	✓
IDK® Tryptophan	K 7730	ELISA	96 Tests	EDTA Plasma, Serum, dried blood	✓
IDK® Tryptophan high sensitive	KR3730	ELISA	96 Tests	Plasma, Serum, Brain tissue (mouse/rat), Cell Culture Supernatant, CSF	
IDK® TurbiCAL® (Calprotectin)	TU1021.1 TU1021.2 TU1021.8	Turbidimetry / PETIA	100 Tests 200 Tests 800 Tests	Stool	✓
IDK® TurbiFIT® (Hemoglobin)	TU1031.1 TU1031.2 TU1031.8	Turbidimetry / PETIA	100 Tests 200 Tests 800 Tests	Stool	✓
IDK® TurbiPEL® (Pancreatic Elastase)	TU1011.1 TU1011.2 TU1011.8	Turbidimetry / PETIA	100 Tests 200 Tests 800 Tests	Stool	✓
Vitamin A/E (Retinol / Tocopherol)	KC1600	HPLC	100 Tests	Serum, Plasma	✓
Vitamin B₁ (Thiaminpyrophosphate)	KC2201	HPLC	100 Tests	EDTA-Whole blood	✓
Vitamin B₅ (Pyridoxal-5-Phosphate)	KC2100	HPLC	100 Tests	Plasma, Serum	✓
Vitamin B₆ (Pyridoxal-5-Phosphate)	KC2150	HPLC	100 Tests	Plasma, Serum, EDTA whole-blood	✓
Vitamin C (Ascorbic acid)	KC2900	HPLC	100 Tests	Li-HeparinPlasma	✓
IDK® Vitamin C	K 4000	colorimetric	96 Tests	Li-HeparinPlasma, Serum, Urine	✓
25-OH-Vitamin D₃ / D₂ Reversed Phase	KC3000	HPLC	100 Tests	Serum, Plasma	✓
Vitamin K₁ (Phylloquinone)	KC2400	HPLC	100 Tests	Plasma, Serum	✓
IDK® Zonulin	K 5600	ELISA	96 Tests	Stool	✓
IDK® Zonulin	K 5601	ELISA	96 Tests	Serum	✓



Product*	Cat. No.	Method	Tests	Matrix	CE
Sample preparation tube	K 6997SR		50	for stool extraction	
Stool sample preparation system (unfilled)	K 6998SAS		100	for stool extraction	✓
Stool sample preparation system filled with extraction buffer <i>IDK Extract</i>[®] (dilution 1:100)	K 6999		100	for stool extraction	✓
Stool sample preparation system filled with extraction buffer <i>IDK[®] Amino Extract</i>	K 7999		100	for stool extraction	✓
Stool sample preparation system filled with extraction buffer <i>IDK[®] TurbiTUBE</i>[®]	TU0091.A		100	for stool extraction	✓

*US: all products: Research Use Only. Not for use in diagnostic procedures.

Oxidative Stress / Preventive Medicine

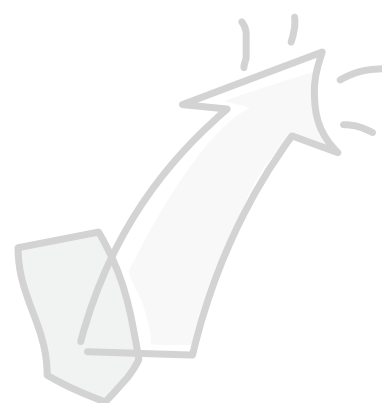
Oxidative and Antioxidative Status

Radical-generating and Degrading Enzymes

Antioxidants

Modified Molecules (Proteins, DNA, Lipids, Sugar Moieties)

Genetic Predispositions



Product*	Cat. No.	Method	Tests	Matrix	CE
8-Hydroxydeoxyguanosine (8-OHdG)	KA4000	ELISA	96 Tests	Urine	
8-Hydroxydeoxyguanosine (8-OHdG)	KJKOGHS10E	ELISA	96 Tests	Serum, Tissue	
ADMA Xpress	K 7860	ELISA	96 Tests	Serum, EDTA Plasma	✓
ADMA	K 7828	ELISA	96 Tests	Citrate Plasma, Serum, EDTA Plasma	✓
ADMA (Mouse/Rat)	KR3001	ELISA	96 Tests	EDTA Plasma, Serum, cell culture media	
Advanced oxidation protein products (AOPP) (Microtiter plate)	KR7811w	photometric	96 Tests	EDTA Plasma	
Advanced oxidation protein products (AOPP) (Cuvettes)	K 7811c	photometric	20Tests	EDTA Plasma	
Carbonyl protein	KR7822	ELISA	96 Tests	Plasma, cellular and extracellular liquids	
Protein quantification test (BCA method)	KR7822BCA				
Centrifugal filtration concentrators	KR7822ZR		100		
Carbonyl Protein	K 7870	ELISA	96 Tests	Serum, Plasma	✓
L-Citrulline	K 6600	colorimetric	96 Tests	Urine, Serum, Plasma	✓
CRP	K 9710s	ELISA	96 Tests	Plasma, Serum, Urine, Stool , dried blood	✓
CRP (1-point calibration)	K 9720s	ELISA	96 Tests	Plasma, Serum, Urine, Stool, dried blood	✓
Glutathione (GSH / GSSG)	KC1800	HPLC	100 Tests	EDTA-Whole blood	✓
MutaPLATE® GST-M1/T1 (TM)	KF1902196	<i>real time</i> PCR (open systems)	96 Tests	DNA (e.g. whole blood, cheek swab)	✓
MutaPLATE® GST-P1 (TM)	KF1903196	<i>real time</i> PCR (open systems)	96 Tests	DNA (e.g. whole blood, cheek swab)	✓



Product*	Cat. No.	Method	Tests	Matrix	CE
Haptoglobin Typing [not available in Portugal and Spain]	KSA71001	ELISA	96 Tests	Serum, Plasma	✓
ImAnOx® (TAS/TAC) (Antioxidative Capacity)	KC5200	colorimetric	96 Tests	EDTA Plasma, Serum	✓
IDK® Kynurenine	K 7728	ELISA	96 Tests	EDTA Plasma, Serum, dried blood	✓
IDK® Kynurenine high sensitive	KR3728	ELISA	96 Tests	Plasma, Serum, Brain tissue (mouse/rat), Cell Culture Supernatant, CSF	
IDK® Kynureninic acid (KynA)	K 7735	ELISA	96 Tests	Urine	✓
Lysozyme	K 6900	ELISA	96 Tests	Stool	✓
Lysozyme (1-point calibration)	K 6901	ELISA	96 Tests	Stool	✓
Lysozyme	K 6902	ELISA	96 Tests	Serum, Urine, Liquor	✓
Lysozyme (1-point calibration)	K 6903	ELISA	96 Tests	Serum, Urine, Liquor	✓
Malondialdehyde (MDA)	KC1900	HPLC	100 Tests	Serum, Plasma, Urine	✓
IDK® Myeloperoxidase (MPO)	K 6631B	ELISA	96 Tests	Serum, Plasma	✓
Nitrotyrosine	K 7824	ELISA	96 Tests	Stool, EDTA Plasma, Serum	✓
Nitrotyrosine	K 7829	ELISA	96 Tests	EDTA Plasma, Serum, dried blood	✓
ox-LDL/MDA Adduct in US: FDA Class I Exempt Device. For In Vitro Diagnostic Use.	K 7810	ELISA	96 Tests	EDTA Plasma, Serum, dried blood	✓
ox-LDL Autoantibody (anti ox-LDL)	K 7809	ELISA	96 Tests	EDTA Plasma, Serum	✓
PerOx (TOS/TOC) (Oxidative Capacity)	KC5100	colorimetric	96 Tests	EDTA Plasma, Serum	✓
IDK® PMN-Elastase	K 6840	ELISA	96 Tests	Stool	✓
IDK® PMN-Elastase (1-point calibration)	K 6830	ELISA	96 Tests	Stool	✓
IDK® PMN-Elastase	K 6841	ELISA	96 Tests	Serum, Plasma, Seminal Plasma	✓
IDK® PMN-Elastase (1-point calibration)	K 6831	ELISA	96 Tests	Serum, Plasma, Seminal Plasma	✓
IDK® Quinolinic acid (QuinA)	K 7736	ELISA	96 Tests	Urine	✓
SDMA	K 7780	ELISA	96 Tests	EDTA plasma, Serum, Li-heparin plasma (human, canine, feline) EDTA Plasma, Serum	✓
IDK® Serotonin	K 6880	ELISA	96 Tests	Serum, dried blood	✓
IDK® Serotonin	K 6881	ELISA	96 Tests	Stool	✓
Thiol status (Sulphydryl status test)	K 1800	colorimetric	96 Tests	Serum, Plasma, Urine, Synovia	✓
MutaCHIP®TOXO (COMT, CYBA, CYP, GST, NAT, SOD, MDR1)	KF391011 KF390011 KF390111	Gene-Chip with MAAT reader system	10 Chips 20 Chips 100Chips	DNA (e.g. whole blood, cheek swab)	✓
IDK® Tryptophan	K 7729	ELISA	96 Tests	Stool	✓
IDK® Tryptophan	K 7730	ELISA	96 Tests	EDTA Plasma, Serum, dried blood	✓
IDK® Tryptophan high sensitive	KR3730	ELISA	96 Tests	Plasma, Serum, Brain tissue (mouse/rat), Cell Culture Supernatant, CSF	
Ubiquinone / Coenzyme Q₁₀	KC1700	HPLC	100 Tests	EDTA Plasma, EDTA-Whole blood, Serum	✓



Product*	Cat. No.	Method	Tests	Matrix	CE
Vitamin A/E (Retinol / Tocopherol)	KC1600	HPLC	100 Tests	Serum, Plasma	✓
IDK® Vitamin C (Ascorbic acid)	K 4000	colorimetric	96 Tests	Li-HeparinPlasma, Serum, Urine	✓
Vitamin C (Ascorbic acid)	KC2900	HPLC	100 Tests	Li-HeparinPlasma	✓

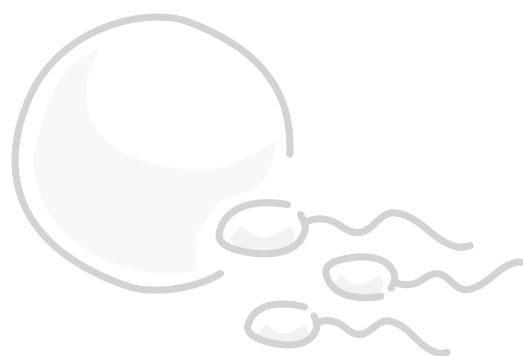
*US: all products: Research Use Only. Not for use in diagnostic procedures.

Fertility

Pre-Eclampsia

Food Intolerance

Inflammation



Product*	Cat. No.	Method	Tests	Matrix	CE
Anti-Müllerian Hormone (AMH) <small>[not available in Italy, UAE, Iran]</small>	KKT804	ELISA	96	Serum, Plasma (Heparin, EDTA)	✓
CRP	K 9710s	ELISA	96 Tests	Plasma, Serum, Urine, Stool, dried blood	✓
CRP (1-point calibration)	K 9720s	ELISA	96 Tests	Plasma, Serum, Urine, Stool, dried blood	✓
ID-Vit® Folic acid	KIF005	Direct MTP assay	96 Tests	Serum	✓
IDK® PMN-Elastase	K 6840	ELISA	96 Tests	Stool	✓
IDK® PMN-Elastase (1-point calibration)	K 6830	ELISA	96 Tests	Stool	✓
IDK® PMN-Elastase	K 6841	ELISA	96 Tests	Serum, Plasma, Seminal Plasma	✓
IDK® PMN-Elastase (1-point calibration)	K 6831	ELISA	96 Tests	Serum, Plasma, Seminal Plasma	✓
Relaxin	K 9210	ELISA	96 Tests	Serum, Urine, Seminal plasma, Tissue, Plasma	✓
Thymosin α_1	KR9510	ELISA	96 Tests	Serum, Thymus extract	
Thymosin β_4	KR9520	ELISA	96 Tests	Serum, Thymus extract	
Thymulin	KR9810	ELISA	96 Tests	Serum, Thymus extract	
anti-human epidermal Transglutaminase IgA (anti-heTG IgA)	K 9396	ELISA	96 Tests	Serum, Plasma	✓
anti-human tissue Transglutaminase IgA (anti-htTG IgA)	K 9399	ELISA	96 Tests	Serum, Plasma	✓
anti-human tissue Transglutaminase sIgA (anti-htTG sIgA)	K 9393	ELISA	96 Tests	Stool	✓

*US: all products: Research Use Only. Not for use in diagnostic procedures.

Oncology

Prevention of Colon Cancer

Early Detection of Colon Cancer

Bone Metastases

Therapy Monitoring



Product*	Cat. No.	Method	Tests	Matrix	CE
Bone Sialoprotein (BSP)	KR4222	ELISA	96 Tests	Serum, EDTA Plasma	
<i>IDK</i> ® S100A12 (Calgranulin C, EN-RAGE)	K 6938	ELISA	96 Tests	Stool	✓
<i>IDK</i> ® S100A12 (Calgranulin C, EN-RAGE)	K 6939	ELISA	96 Tests	Serum	✓
<i>IDK</i> ® Calprotectin (MRP 8/14)	K 6927	ELISA	96 Tests	Stool, dried fecal extract	✓
<i>IDK</i> ® Calprotectin (MRP 8/14) (1-point calibration)	K 6967	ELISA	96 Tests	Stool	✓
S100A8/A9 MRP8/14, Calprotectin (Mouse/Rat)	KR6936	ELISA	96 Tests	Plasma, Serum, Urine, Cell Culture Supernatant, Stool	
MutaPLATE® GST-M1/T1 (TM)	KF1902196	<i>real time</i> PCR (open systems)	96 Tests	DNA (e.g. whole blood, cheek swab)	✓
MutaPLATE® GST-P1 (TM)	KF1903196	<i>real time</i> PCR (open systems)	96 Tests	DNA (e.g. whole blood, cheek swab)	✓
<i>IDK</i> ® Hemoglobin, human (Hb)	K 7816D	ELISA	96 Tests	Stool	✓
<i>IDK</i> ® Hemoglobin, human (1-point calibration)	K 7836D	ELISA	96 Tests	Stool	✓
<i>IDK</i> ® Hemoglobin-Haptoglobin-Complex (Hb-Hp-Complex)	K 7817D	ELISA	96 Tests	Stool	✓
<i>IDK</i> ® Hemoglobin-Haptoglobin-Complex (1-point calibration)	K 7837D	ELISA	96 Tests	Stool	✓
<i>IDK</i> ® IDO activity	K 7726	ELISA	96 Tests	Serum, EDTA Plasma, dried blood	✓
<i>IDK</i> ® Kynurenine	K 7728	ELISA	96 Tests	EDTA Plasma, Serum, dried blood	✓
<i>IDK</i> ® Kynurenine high sensitive	KR3728	ELISA	96 Tests	Plasma, Serum, Brain tissue (mouse/rat), Cell Culture Supernatant, CSF	
Thymosin α_1	KR9510	ELISA	96 Tests	Serum, Thymus extract	
Thymosin β_4	KR9520	ELISA	96 Tests	Serum, Thymus extract	
<i>IDK</i> ® TNF α (Tumor Necrosis Factor α)	K 9610	ELISA	96 Tests	Serum, Cell Culture Supernatant, Plasma, Stool	✓



Product*	Cat. No.	Method	Tests	Matrix	CE
IDK® TurbiFIT® (Hemoglobin)	TU1031.1 TU1031.2 TU1031.8	Turbidimetry / PETIA	100 Tests 200 Tests 800 Tests	Stool	✓

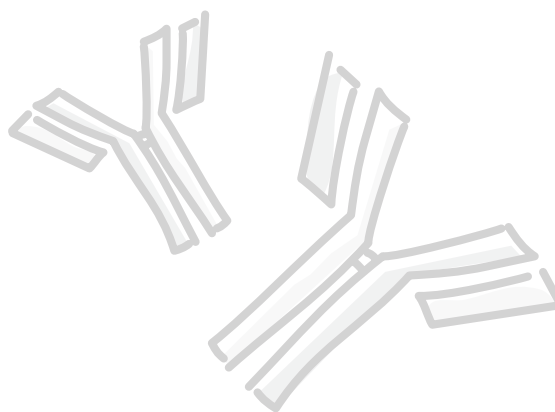
*US: all products: Research Use Only. Not for use in diagnostic procedures.

Clinical Immunology

Immune Status

Inflammation

Oncology



Product*	Cat. No.	Method	Tests	Matrix	CE
IDK® α1-Antitrypsin (Alpha-1-Proteinase-Inhibitor)	K 6750	ELISA	96 Tests	Stool	✓
IDK® α1-Antitrypsin (1-point calibration) (Alpha-1-Proteinase-Inhibitor)	K 6760	ELISA	96 Tests	Stool	✓
Biologic therapy monitoring → IDKmonitor®					
IDK® S100A12 (Calgranulin C, EN-RAGE)	K 6938	ELISA	96 Tests	Stool	✓
IDK® S100A12 (Calgranulin C, EN-RAGE)	K 6939	ELISA	96 Tests	Serum	✓
IDK® Calprotectin (MRP 8/14)	K 6928	ELISA	96 Tests	Urine	✓
IDK® Calprotectin (MRP 8/14)	K 6935	ELISA	96 Tests	Serum, Plasma	✓
IDK® Calprotectin (MRP 8/14)	K 6927	ELISA	96 Tests	Stool, dried fecal extract	✓
IDK® Calprotectin (MRP 8/14) (1-point calibration)	K 6967	ELISA	96 Tests	Stool	✓
S100A8/A9 MRP8/14, Calprotectin (Mouse/Rat)	KR6936	ELISA	96 Tests	Plasma, Serum, Urine, Cell Culture Supernatant, Stool	
MutaPLEX® Coronavirus	KG192696 KG1926-384 KG1926-768	<i>real time</i> RT-PCR (open systems) (+ Extraction control)	96 Tests 384 Tests 768 Tests	biological specimen	✓
MutaPLEX® CoV-2 MUT	KG193196	<i>real time</i> RT-PCR (open systems) (+ Extraction control)	96 Tests	RNA (biological specimen)	✓
CRP	K 9710s	ELISA	96 Tests	Plasma, Serum, Urine, Stool, dried blood	✓
CRP (1-point calibration)	K 9720s	ELISA	96 Tests	Plasma, Serum, Urine, Stool, dried blood	✓
β-Defensin 2	K 6500	ELISA	96 Tests	Stool	✓
IDK® EDN (Eosinophil-derived Neurotoxin)	K 6811	ELISA	96 Tests	Serum, Urine, Plasma, Stool	✓
IDK® EDN (Eosinophil-derived Neurotoxin) (1-point-calibration)	K 6821	ELISA	96 Tests	Serum, Urine, Plasma, Stool	✓
IDKmonitor® Adalimumab drug level (e.g. Humira®)	K 9657	ELISA	96 Tests	Serum, EDTA Plasma	✓
IDKmonitor® Adalimumab free ADA (antibodies against adalimumab e.g. Humira®)	K 9652	ELISA	96 Tests	Serum, EDTA Plasma	✓
IDKmonitor® Adalimumab total ADA (total antibodies against adalimumab e.g. Humira®)	K 9651	ELISA	96 Tests	Serum, EDTA Plasma	✓
IDKmonitor® Certolizumab drug level (e.g. Cimzia®)	KR9662	ELISA	96 Tests	Serum, EDTA Plasma	
IDKmonitor® Etanercept drug level (e.g. Enbrel®)	K 9646	ELISA	96 Tests	Serum, EDTA Plasma	✓
IDKmonitor® Etanercept free ADA (antibodies against etanercept e.g. Enbrel®)	K 9653	ELISA	96 Tests	Serum, EDTA Plasma	✓
IDKmonitor® Golimumab drug level (e.g. Simponi®)	K 9656	ELISA	96 Tests	Serum, EDTA Plasma	✓
IDKmonitor® Golimumab free ADA (antibodies against golimumab e.g. Simponi®)	K 9649	ELISA	96 Tests	Serum, EDTA Plasma	✓
IDKmonitor® Infliximab drug level (e.g. Remicade®)	K 9655	ELISA	96 Tests	Serum, EDTA Plasma	✓



Product*	Cat. No.	Method	Tests	Matrix	CE
IDKmonitor® Infliximab free ADA (antibodies against infliximab e.g. Remicade®)	K 9650	ELISA	96 Tests	Serum, EDTA Plasma	✓
IDKmonitor® Infliximab total ADA (total antibodies against infliximab e.g. Remicade®)	K 9654	ELISA	96 Tests	Serum, EDTA Plasma	✓
IDKmonitor® Rituximab drug level (e.g. MabThera®)	K 9661	ELISA	96 Tests	Serum, EDTA Plasma	✓
IDKmonitor® Ustekinumab drug level (e.g. Stelara®)	K 9660	ELISA	96 Tests	Serum, EDTA Plasma	✓
IDKmonitor® Ustekinumab free ADA (antibodies against ustekinumab e.g. Stelara®)	K 9666	ELISA	96 Tests	Serum, EDTA Plasma	✓
IDKmonitor® Ustekinumab total ADA (total antibodies against ustekinumab e.g. Stelara®)	K 9667	ELISA	96 Tests	Serum, EDTA Plasma	✓
IDKmonitor® Vedolizumab drug level (e.g. Entyvio®)	K 9658	ELISA	96 Tests	Serum, EDTA Plasma	✓
IDKmonitor® Vedolizumab drug level (e.g. Entyvio®)	KM9600	LC-MS/MS	50 Tests	Serum, EDTA Plasma	
IDKmonitor® Vedolizumab free ADA (antibodies against vedolizumab)	K 9648	ELISA	96 Tests	Serum, EDTA Plasma	✓
IDK® secretory Immunglobulin A (sIgA) in US: FDA Class I Exempt Device. For In Vitro Diagnostic Use.	K 8870	ELISA	96 Tests	Saliva, Stool	✓
IDK® secretory Immunglobulin A (sIgA) (1-point calibration)	K 8880	ELISA	96 Tests	Saliva, Stool	✓
Immunglobulin E (IgE)	K 6511	ELISA	96 Tests	Plasma, Serum, Stool	✓
Immunglobulin G (IgG)	K 6510A	ELISA	96 Tests	Plasma, Serum, Urine	✓
Lysozyme	K 6900	ELISA	96 Tests	Stool	✓
Lysozyme (1-point calibration)	K 6901	ELISA	96 Tests	Stool	✓
Lysozyme	K 6902	ELISA	96 Tests	Serum, Urine, Liquor	✓
Lysozyme (1-point calibration)	K 6903	ELISA	96 Tests	Serum, Urine, Liquor	✓
IDK® Myeloperoxidase (MPO)	K 6631B	ELISA	96 Tests	Serum, Plasma	✓
IDK® Myeloperoxidase (MPO)	K 6630	ELISA	96 Tests	Urine, Stool	✓
IDK® PMN-Elastase	K 6840	ELISA	96 Tests	Stool	✓
IDK® PMN-Elastase (1-point calibration)	K 6830	ELISA	96 Tests	Stool	✓
IDK® PMN-Elastase	K 6841	ELISA	96 Tests	Serum, Plasma, Seminal Plasma	✓
IDK® PMN-Elastase (1-point calibration)	K 6831	ELISA	96 Tests	Serum, Plasma, Seminal Plasma	✓
MutaPLEX® RespiraScreen 1	KG192796 KG1927-384	<i>real time</i> RT-PCR (open systems) (+ extraction control)	96 Tests 384 Tests	RNA (biological samples)	✓
MutaPLEX® RespiraScreen 2 DIFF	KG192896 KG1928-384 KG1928-768	<i>real time</i> RT-PCR (open systems) (+ extraction control)	96 Tests 384 Tests 768 Tests	RNA (biological samples)	✓
MutaPLEX® RespiraScreen 3 DUO	KG192996 KG1929-384	<i>real time</i> RT-PCR (open systems) (+ extraction control)	96 Tests	RNA (biological samples)	✓
MutaPLEX® S2 multi gene	KG193096	<i>real time</i> RT-PCR (open systems) (+ Extraction control)	96 Tests	RNA (biological samples)	✓
IDK® anti-SARS-CoV-2 IgG	K 5000	ELISA	96 Tests	EDTA Plasma, Serum	✓
IDK® anti-SARS-CoV-2 IgG (quantitative)	K 5004	ELISA	96 Tests	EDTA Plasma, Serum	✓
IDK® anti-SARS-CoV-2 IgM	K 5001	ELISA	96 Tests	EDTA Plasma, Serum	✓
Thymosin α_1	KR9510	ELISA	96 Tests	Serum, Thymus extract	
Thymosin β_4	KR9520	ELISA	96 Tests	Serum, Thymus extract	
Thymulin	KR9810	ELISA	96 Tests	Serum, Thymus extract	
TNFα blocker monitoring → IDKmonitor®					
IDK® TNFα (Tumor Necrosis Factor α)	K 9610	ELISA	96 Tests	Serum, Cell Culture Supernatant, Plasma Stool	✓

*US: all products: Research Use Only. Not for use in diagnostic procedures.

Complementary Medicine

Vitamins

Enzymes with antioxidative activity

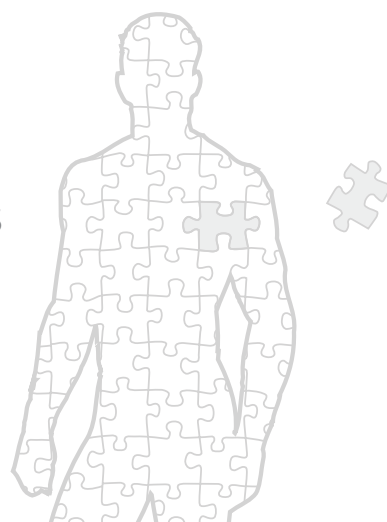
Non-enzymatic markers for oxidative stress

Neuroactive substances / Amino acids

Biogenic amines / non-steroidal hormones

Trace elements

Genetic predisposition markers (PCR)



Product*	Cat. No.	Method	Tests	Matrix	CE
8-Hydroxydeoxyguanosine (8-OHdG)	KA4000	ELISA	96 Tests	Urine	
8-Hydroxydeoxyguanosine (8-OHdG)	KJKOGHS10E	ELISA	96 Tests	Serum, Tissue	
Advanced oxidation protein products (AOPP) (Microtiter plate)	KR7811w	photometric	96 Tests	EDTA Plasma	
Advanced oxidation protein products (AOPP) (Cuvettes)	K 7811c	photometric	20 Tests	EDTA Plasma	
Anti-Müllerian Hormone (AMH) <small>[not available in Italy, UAE, Iran]</small>	KKT804	ELISA	96	Serum, Plasma (Heparin, EDTA)	✓
IDK® Arginine	KR7733	ELISA	96 Tests	EDTA Plasma	
BCAA	K 7016	colorimetric	96 Tests	EDTA Plasma, Serum	✓
BCAA (in dried blood spots)	K 7016DBS	colorimetric	96 Tests	dried blood	✓
IDK® Biotin (vitamin H)	K 8141	ELISA	96 Tests	Serum, Plasma, Urine, Milk	✓
ID-Vit® Biotin	KIF007	Direct MTP assay	96 Tests	Serum	✓
Calcium <small>[not available in Japan]</small>	KJCCA030	colorimetric	200 Tests	Serum, Plasma, Urine, biol. fluids, tissue	
Coper <small>[not available in Japan]</small>	KJCCU400	colorimetric	100 Tests	Serum, Plasma, Urine, biol. fluids, tissue	
CRP	K 9710s	ELISA	96 Tests	Plasma, Serum, Urine, Stool, dried blood	✓
CRP (1-point calibration)	K 9720s	ELISA	96 Tests	Plasma, Serum, Urine, Stool, dried blood	✓
ID-Vit® Folic acid	KIF005	Direct MTP assay	96 Tests	Serum	✓
GABA	K 7009	ELISA	96 Tests	Stool	✓



Product*	Cat. No.	Method	Tests	Matrix	CE
GABA	KR7012	ELISA	96 Tests	EDTA Plasma, Serum, Urine, dried urine	
Glutamate	on request				
Glutamine	on request				
Glutathione (GSH / GSSG)	KC1800	HPLC	100 Tests	EDTA-Whole blood	✓
Glycin	on request				
MutaPLATE® GST-M1/T1 (TM)	KF1902196	<i>real time</i> PCR (open systems)	96 Tests	DNA (e.g. whole blood, cheek swab)	✓
MutaPLATE® GST-P1 (TM)	KF1903196	<i>real time</i> PCR (open systems)	96 Tests	DNA (e.g. whole blood, cheek swab)	✓
Histamine	K 8212	ELISA	96 Tests	EDTA Plasma, Urine, dried blood	✓
Histamine	K 8213	ELISA	96 Tests	Stool	✓
ImAnOx (TAS/TAC) (Antioxidative Capacity)	KC5200	colorimetric	96 Tests	EDTA Plasma, Serum	✓
IDK® IDO activity	K 7726	ELISA	96 Tests	Serum, EDTA Plasma, dried blood	✓
Iron [not available in Japan]	KJCFE005	colorimetric	100 Tests	Serum, Plasma, Urine, biol. fluids, tissue	
Kryptopyrrole	K 7823	colorimetric	40 Tests	Urine	
IDK® Kynurenine	K 7728	ELISA	96 Tests	EDTA Plasma, Serum, dried blood	✓
IDK® Kynurenine high sensitive	KR3728	ELISA	96 Tests	Plasma, Serum, Brain tissue (mouse/rat), Cell Culture Supernatant, CSF	
IDK® Kynurenic acid (KynA)	K 7735	ELISA	96 Tests	Urine	✓
Magnesium [not available in Japan]	KJCMG035	colorimetric	100 Tests	Serum, Plasma, Urine, biol. fluids, tissue	
Malondialdehyde (MDA)	KC1900	HPLC	100 Tests	Serum, Plasma, Urine	✓
IDK® Myeloperoxidase (MPO)	K 6631B	ELISA	96 Tests	Serum, Plasma	✓
ID-Vit® Niacin	KIF003	Direct MTP assay	96 Tests	Serum	✓
Nitrotyrosine	K 7824	ELISA	96 Tests	Stool, EDTA Plasma, Serum	✓
Nitrotyrosine	K 7829	ELISA	96 Tests	EDTA Plasma, Serum, dried blood	✓
ox-LDL/MDA Adduct in US: FDA Class I Exempt Device. For In Vitro Diagnostic Use.	K 7810	ELISA	96 Tests	EDTA Plasma, Serum, dried blood	✓
ox-LDL Autoantibody (anti ox-LDL)	K 7809	ELISA	96 Tests	EDTA Plasma, Serum,	✓
Pantothenic acid, ID- Vit®	KIF004	Direct MTP assay	96 Tests	Serum	✓
PerOx (TOS/TOC) (Oxidative Capacity)	KC5100	colorimetric	96 Tests	EDTA Plasma, Serum	✓
Phenylalanine	KR7014	ELISA	96 Tests	EDTA Plasma, Serum	
Pregnenolone sulfate LC-MS/MS-Kit	KM2000	LC-MS/MS	100 Tests	Citrate Plasma, Serum	✓
IDK® Quinolinic acid (QuinA)	K 7736	ELISA	96 Tests	Urine	✓
IDK® Serotonin	K 6880	ELISA	96 Tests	Serum, dried blood	✓
IDK® Serotonin	K 6881	ELISA	96 Tests	Stool	✓
Thiol status (Sulphydryl status test)	K 1800	colorimetric	96 Tests	Serum, Plasma, Urine, Synovia	✓



Product*	Cat. No.	Method	Tests	Matrix	CE
IDK® Tryptophan	K 7729	ELISA	96 Tests	Stool	✓
IDK® Tryptophan	K 7730	ELISA	96 Tests	EDTA Plasma, Serum, dried blood	✓
IDK® Tryptophan high sensitive	KR3730	ELISA	96 Tests	Plasma, Serum, Brain tissue (mouse/rat), Cell Culture Supernatant, CSF	
Tyrosine	KR7015	ELISA	96 Tests	EDTA Plasma, Serum	
Ubiquinone / Coenzyme Q₁₀	KC1700	HPLC	100 Tests	EDTA Plasma, EDTA-Whole blood, Serum	✓
Vitamin A/E (Retinol / Tocopherol)	KC1600	HPLC	100 Tests	Serum, Plasma	✓
ID-Vit® Vitamin B₁	KIF001	Direct MTP assay	96 Tests	Whole blood	✓
ID-Vit® Vitamin B₂	KIF002S	Direct MTP assay	96 Tests	Serum	✓
ID-Vit® Vitamin B₂	KIF002VB	Direct MTP assay	96 Tests	Vollblut	✓
ID-Vit® Vitamin B₆	KIF006	Direct MTP assay	96 Tests	Serum	✓
ID-Vit® Vitamin B₁₂	KIF012	Direct MTP assay	96 Tests	Serum	✓
Vitamin C (Ascorbic acid)	KC2900	HPLC	40 Tests	Li-HeparinPlasma	✓
IDK® Vitamin C	K 4000	colorimetric	96 Tests	Li-HeparinPlasma, Serum, Urine	✓
25-OH-Vitamin D	K 2020	ELISA	96 Tests	Serum	
25-OH-Vitamin D₃ / D₂ Reversed Phase	KC3000	HPLC	100 Tests	Serum, Plasma	✓
Vitamin K₁ (Phylloquinone)	KC2400	HPLC	100 Tests	Plasma, Serum	✓
Zinc [not available in Japan]	KJCZN001	colorimetric	100 Tests	Serum, Plasma, Urine, biol. fluids, tissue	

*US: all products: Research Use Only. Not for use in diagnostic procedures.

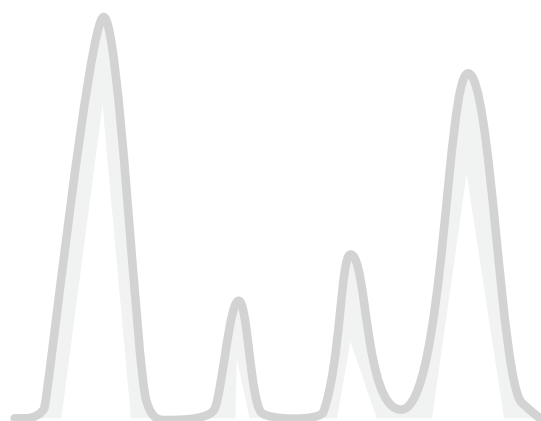
HPLC Applications

Skeletal System

Oxidative Stress

Preventive Medicine

Cardiovascular and Renal Systems



Product*	Cat. No.	Method	Tests	Matrix	Detection	Elution	CE
Glutathione (GSH / GSSG)	KC1800	HPLC	100 Tests	EDTA- Whole blood	Fluorescence	isocratic	✓
Malondialdehyde (MDA)	KC1900	HPLC	100 Tests	Plasma, Serum, Urine	Fluorescence	isocratic	✓
Porphyrins	KC2601	HPLC	100 Tests	Urine	Fluorescence	gradient	✓
Ubiquinone / Coenzyme Q₁₀	KC1700	HPLC	100 Tests	EDTA Plasma, EDTA-Whole blood, Serum	UV Detection	isocratic	✓
Vitamin A/E (Retinol / Tocopherol)	KC1600	HPLC	100 Tests	Serum, Plasma	UV Detection	isocratic	✓
Vitamin B₁ (Thiaminpyrophosphate)	KC2201	HPLC	100 Tests	EDTA-Whole blood	Fluorescence	isocratic	✓
Vitamin B₆ (Pyridoxal-5-Phosphate)	KC2100	HPLC	100 Tests	Plasma, Serum	Fluorescence	isocratic	✓
Vitamin B₆ (Pyridoxal-5-Phosphate)	KC2150	HPLC	100 Tests	Plasma, Serum, EDTA- whole blood	Fluorescence	isocratic	✓
Vitamin C (Ascorbic acid)	KC2900	HPLC	100 Tests	Li-HeparinPlasma	UV Detection	isocratic	✓
25(OH)-Vitamin D₃ / D₂ Reversed Phase	KC3000	HPLC	100 Tests	Serum, Plasma	UV-Detection	isocratic	✓
Vitamin K₁ (Phylloquinone)	KC2400	HPLC	100 Tests	Plasma, Serum	Fluorescence	isocratic	✓
Zinc-Protoporphyrin / Protoporphyrin	KC2700	HPLC	100 Tests	EDTA whole blood	Fluorescence	isocratic	✓

*US: all products: Research Use Only. Not for use in diagnostic procedures.

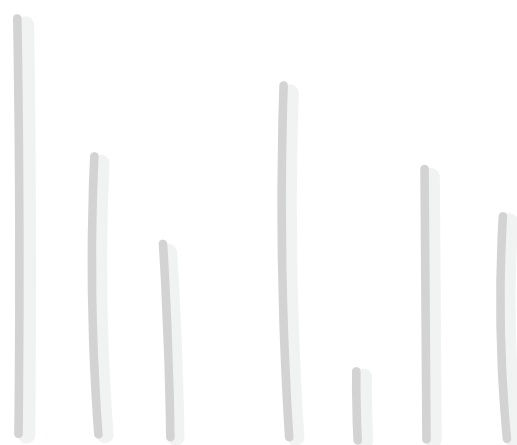
LC-MS/MS Applications

Skeletal System

Oxidative Stress

Preventive Medicine

Cardiovascular and Renal Systems



Product*	Catalogue No.	Method	Tests	Matrix	Mode	Polarity	CE
IDK® Casomorphin/Gliadorphin Peptides LC-MS/MS-Kit	KM8000	LC-MS/MS	100 Tests	Stabilized urine	MRM	ESI positive	✓
Hepcidin-25 LC-MS/MS-Kit	KM4000	LC-MS/MS	96 Tests	Plasma	MRM	ESI positive	✓
IDKmonitor® Vedolizumab drug level LC-MS/MS-Kit (e.g. Entyvio®)	KM9600	LC-MS/MS	50 Tests	Serum; EDTA Plasma	SRM	ESI positive	
Pregnenolone sulfate LC-MS/MS-Kit	KM2000	LC-MS/MS	100 Tests	Serum, Plasma	MRM	ESI negative	✓
1,25-(OH)₂-Vitamin D₃/D₂ ImmuTube® LC-MS/MS-Kit	KM1000	LC-MS/MS	50 Tests	Plasma, Serum	MRM	ESI positive	✓
1,25-(OH)₂-Vitamin D₃/D₂ ImmuTube® Extraction Kit	KM1100	Extraction	50 Samples	Serum, Plasma			✓
ImmuTube® Vitamin D duo LC-MS/MS Kit for the determination of 24,25-dihydroxyvitamin D ₃ and 25-hydroxyvitamin D ₃ /D ₂	KM1310	LC-MS/MS	50 Tests	Serum, Plasma	MRM	ESI positive	✓
ImmuTube® Vitamin D duo LC-MS/MS Extraction kit	KM1311	LC-MS/MS	50 samples	Serum, Plasma			✓
IDKmagnetics® Vitamin D duo LC-MS/MS Kit for the determination of 24,25-dihydroxyvitamin D ₃ and 25-hydroxyvitamin D ₃ /D ₂	KM1320	LC-MS/MS	96 Tests	Serum, Plasma	MRM	ESI positive	✓
IDKmagnetics® Vitamin D duo LC-MS/MS Extraction kit	KM1321	LC-MS/MS	96 samples	Serum, Plasma			✓

*US: all products: Research Use Only. Not for use in diagnostic procedures.

Molecular Biology

Detoxification / Oncology

Food Intolerance

Cardiovascular System

Pharmacogenetic

Detection of Pathogens



Keyword	Product*	Cat. No.	Method	Tests	Matrix	CE
ACE	MutaREAL® ACE	KF290032 KF290096	<i>real time</i> PCR (capillary system)	32 Tests 96 Tests	DNA (e.g. whole blood, cheek swab)	✓
Akkermansia muc. + Faecalibacterium pr.	MutaPLEX® AKM/FAEP (Akkermansia muciniphila, Faecalibacterium prausnitzii)	KG1911-96 KG1911-384	<i>real time</i> PCR (open systems) (+ extraction control)	96 Tests 384 Tests	DNA (e.g. clinical samples)	✓
Aldolase B	MutaPLATE® Aldolase B (TM)	KF190432 KF190496	<i>real time</i> PCR (open systems)	32 Tests 96 Tests	DNA (e.g. whole blood, cheek swab)	✓
Aldolase B	MutaPLATE® Aldolase B (A174D)	KF190432-B KF190496-B	<i>real time</i> PCR (open systems)	32 Tests 96 Tests	DNA (e.g. whole blood, cheek swab)	✓
ApoE	MutaREAL® ApoE	KF290732 KF290796	<i>real time</i> PCR (capillary system)	32 Tests 96 Tests	DNA (e.g. whole blood, cheek swab)	✓
Atopobium vaginae / Gardnerella vaginalis	MutaPLEX® Atopobium vaginae/ Gardnerella vaginalis	KSR191696	<i>real time</i> PCR (open systems) (+ extraction control)	96 Tests	DNA (from clinical specimen)	
Babesia	MutaPLEX® Babesia	KG192432 KG192496	<i>real time</i> PCR (open systems) (+ extraction control)	32 Tests 96 Tests	DNA (from tick or clinical samples)	✓
Blastocystis (+ subtyping hominis)	MutaPLEX® Blastocystis	KG191896	<i>real time</i> PCR (open system) (+ extraction control)	96 Tests	DNA (e.g. from biological materials)	✓
Blastocystis Subtype 1, 3, 4, 7	MutaPLEX® Blastocystis ST-1-3-4-7	KG192132 KG192196	<i>real time</i> PCR (open system) (+ extraction control)	32 Tests 96 Tests	DNA (e.g. from biological materials)	✓
Bordetella pertussis / parapertussis	MutaPLEX® Bordetella	KG190932 KG190996	<i>real time</i> PCR (open systems) (+ extraction control)	32 Tests 96 Tests	DNA (e.g. from biological materials)	✓
Borrelia	MutaPLEX® Borrelia	KG1917032 KG1917096	<i>real time</i> PCR (open systems) (+ extraction control)	32 Tests 96 Tests	DNA (from biological liquids)	✓
Borrelia/Rickettsia	MutaPLEX® Borrelia/Rickettsia	KG194032 KG194096	<i>real time</i> PCR (open systems) (+ extraction control)	32 Tests 96 Tests	DNA (from biological liquids, incl. ticks)	✓
Candida albicans / Fungi	MutaPLEX® Candida albicans/ Fungi	KSR191496	<i>real time</i> PCR (open systems) (+ extraction control)	96 Tests	DNA (from clinical specimen)	
Candida krusei / Candida glabrata	MutaPLEX® Candida krusei/Candida glabrata	KSR191596	<i>real time</i> PCR (open systems) (+ extraction control)	96 Tests	DNA (from clinical specimen)	
Chlamydia trachomatis / Neisseria gonorrhoe	MutaPLEX® Chlamydia trachomatis/ Neisseria gonorrhoe	KS293696	<i>real time</i> PCR (open system) (+ extraction control)	96 Tests	DNA (from clinical specimen)	
COMT	MutaREAL® COMT	KF291532 KF291596	<i>real time</i> PCR (capillary system)	32 Tests 96 Tests	DNA (e.g. from biological materials)	✓



Keyword	Product*	Cat. No.	Method	Tests	Matrix	CE
SARS-CoV-2 (E, RdRP, S gene), Housekeeping gene (b-Actin)	MutaPLEX® Coronavirus	KG192696 KG1926-384 KG1926-768	<i>real time</i> RT-PCR (open systems) (+ Extraction control)	96 Tests 384 Tests 768 Tests	biological samples	✓
SARS-CoV-2 (E, N, RdRP, S gene), House-keeping gene (b-Actin)	MutaPLEX® Coronavirus 4G	KG193696 KG1936-384 KG1936-768	<i>real time</i> RT-PCR (open systems) (+ Extraction control)	96 Tests 384 Tests 768 Tests	biological samples	✓
SARS-CoV-2 lineages B.1.1.7 (UK), B.1.351 (ZA), P.1 (BRA)	MutaPLEX® CoV-2 MUT	KG193196	<i>real time</i> RT-PCR (open systems) (+ Extraction control)	96 Tests	biological samples	✓
SARS-CoV-2 spike protein mutations E484K and N501Y	MutaPLEX® CoV-2 MUT 2	KG193296	<i>real time</i> RT-PCR (open systems) (+ Extraction control)	96 Tests	biological samples	✓
SARS-CoV-2 spike protein mutations L452R and P681R	MutaPLEX® CoV-2 MUT 3	KG193396	<i>real time</i> RT-PCR (open systems) (+ Extraction control)	96 Tests	biological samples	✓
CYP2D6	MutaCHIP® CYP2D6 (cytochrome P450 2D6)	KF391005 KF390005 KF390105	Gene-Chip with MAAT reader system	10 Chips 20 Chips 100Chips	DNA (e.g. whole blood, cheek swab)	✓
CYP2D6 and further cytochrome mutations	MutaCHIP® CYP+ (1A2, 2B6, 2C9, 2C19, 2D6, 3A4, 3A5, VKORC1)	KF391014 KF390014 KF390114	Gene-Chip with MAAT reader system	10 Chips 20 Chips 100Chips	DNA (e.g. whole blood, cheek swab)	✓
Cystic Fibrosis	MutaPLATE® Cystic Fibrosis	KG190832 KG190896	<i>real time</i> PCR (open systems)	32 Tests 96 Tests	DNA (from clinical specimen)	✓
Dermatophytes	MutaCHIP® DERMA (human dermatophytes)	KFR390016 KFR390116 KFR390316	Gene-Chip with MAAT reader system	20 Chips 100Chips 300Chips	Extracted nucleic acids (from skin or nails)	
DPD (Dihydropyrimidin- dehydrogenase) (*2A)	MutaREAL® DPD	KF291132 KF291196	<i>real time</i> PCR (capillary system)	32 Tests 96 Tests	DNA (e.g. whole blood, cheek swab)	✓
DPD (Dihydropyrimidin- dehydrogenase) (*2A, *13, *D949V, B3)	MutaREAL® DPD-2	KF292032 KF292096	<i>real time</i> PCR (capillary system)	32 Tests 96 Tests	DNA (e.g. whole blood, cheek swab)	✓
Ehrlichia	MutaPLEX® Ehrlichia	KG192532 KG192596	<i>real time</i> PCR (open systems) (+ extraction control)	32 Tests 96 Tests	DNA (from tick or clinical samples)	✓
Enterovirus	MutaPLEX® Enterovirus	KG190232 KG190296	<i>real time</i> RT-PCR (open systems) (+ extraction control)	32 Tests 96 Tests	RNA (biological liquids)	✓
Eubacterium, Bacteroi- des, Bifidobacteria	MutaPLEX® EU/BAC/BIF	KG1912-96 KG1912-384	<i>real time</i> PCR (open systems) (+ extraction control)	96 Tests 384 Tests	DNA (e.g. clinical samples)	✓
Factor II	MutaPLATE® Factor II (TM)	KF1901632 KF1901696	<i>real time</i> PCR (open systems)	32 Tests 96 Tests	DNA (e.g. whole blood, cheek swab)	✓
Factor II	MutaREAL® Factor II	KF291632 KF291696	<i>real time</i> PCR (capillary system)	32 Tests 96 Tests	DNA (e.g. whole blood, cheek swab)	✓
Factor V	MutaPLATE® Factor V (TM)	KF1901732 KF1901796	<i>real time</i> PCR (open systems)	32 Tests 96 Tests	DNA (e.g. whole blood, cheek swab)	✓
Factor V	MutaREAL® Factor V	KF291732 KF291796	<i>real time</i> PCR (capillary system)	32 Tests 96 Tests	DNA (e.g. whole blood, cheek swab)	✓
FSME	MutaPLEX® FSME	KG1916032 KG1916096	<i>real time</i> RT-PCR (open systems) (+ extraction control)	32 Tests 96 Tests	RNA (from tick or clinical samples)	✓
Gastroenteritis	MutaCHIP® GASTRO (Panel for human pathogens causing gastroen- teritis)	KFR390015 KFR390115 KFR390315	Gene-Chip with MAAT reader system	20 Chips 100Chips 300Chips	DNA (clinical samples)	
Adenovirus, norovirus, rotavirus	MutaPLEX® GastroSys 1	KG198632 KG198696	<i>real time</i> RT-PCR (open systems) (+ extraction control)	32 Tests 96 Tests	RNA (clinical, environmental and food samples)	✓
Astrovirus, sapovirus, adenovirus, norovirus G-I, norovirus G-II, rotavirus	MutaPLEX® GastroSys 3	KG198832 KG198896	<i>real time</i> RT-PCR (open systems) (+ extraction control)	32 Tests 96 Tests	RNA (clinical, environmental and food samples)	✓
Campylobacter, salmo- nella, shigella, yersinia	MutaPLEX® GastroSys 4	KG1920-96 KG1920-384	<i>real time</i> PCR (open systems) (+ extraction control)	96 Tests 384 Tests	DNA (clinical specimens, stool)	✓
Streptococci	MutaPLEX® GBS (Group B Streptococci)	KG191096	<i>real time</i> PCR (open systems) (+ extraction control)	96 Tests	DNA (biological liquids)	✓
GST-M1/T1	MutaPLATE® GST-M1/T1 (TM)	KF1902132 KF1902196	<i>real time</i> PCR (open systems)	32 Tests 96 Tests	DNA (e.g. whole blood, cheek swab)	✓



Keyword	Product*	Cat. No.	Method	Tests	Matrix	CE
GST-P1	MutaPLATE® GST-P1 (TM)	KF1903132 KF1903196	<i>real time</i> PCR (open systems)	32 Tests 96 Tests	DNA (e.g. whole blood, cheek swab)	✓
Herpes-simplex virus (HSV)	MutaPLEX® Herpes simplex HSV1/2	KSR190496	<i>real time</i> PCR (open system) (+ extraction control)	96 Tests	DNA (from clinical specimen)	
HFE	MutaREAL® HFE	KF291032 KF291096	<i>real time</i> PCR (capillary system)	32 Tests 96 Tests	DNA (e.g. whole blood, cheek swab)	✓
HLA-DQ	MutaPLATE® HLA-DQ 2+8 (TM)	KF190532 KF190596	<i>real time</i> PCR (open systems)	32 Tests 96 Tests	DNA (e.g. whole blood, cheek swab)	✓
HPV (human papilloma virus)	MutaPLEX® HPV high risk (16/18)	KSR190696	<i>real time</i> PCR (open system) (+ extraction control)	96 Tests	DNA (from clinical specimen)	
HPV (human papilloma virus)	MutaPLEX® HPV high risk (31/33)	KSR190796	<i>real time</i> PCR (open system) (+ extraction control)	96 Tests	DNA (from clinical specimen)	
HPV (human papilloma virus)	MutaPLEX® HPV high risk (35/45)	KSR190896	<i>real time</i> PCR (open system) (+ extraction control)	96 Tests	DNA (from clinical specimen)	
HPV (human papilloma virus)	MutaPLEX® HPV low risk (6/11)	KSR190596	<i>real time</i> PCR (open system) (+ extraction control)	96 Tests	DNA (from clinical specimen)	
HPV (human papilloma virus)	MutaPLEX® HPV Screen	KSR191196	<i>real time</i> PCR (open system) (+ extraction control)	96 Tests	DNA (from clinical specimen)	
Herpes simplex virus/ varizella zoster virus	MutaPLEX® HSV/VZV	KG190632 KG190696	<i>real time</i> PCR (open system) (+ extraction control)	32 Tests 96 Tests	DNA (from clinical specimen)	✓
Lactase	MutaPLATE® Laktase (TM)	KF1907232 KF1907296	<i>real time</i> PCR (open systems)	32 Tests 96 Tests	DNA (e.g. whole blood, cheek swab)	✓
Lactase	MutaREAL® Laktase	KF2907132 KF2907196	<i>real time</i> PCR (capillary system)	32 Tests 96 Tests	DNA (from biological materials)	✓
Legionella pneumophila	MutaPLEX® Legionella pneumophila	KG196432 KG196496	<i>real time</i> PCR (open systems) (+ extraction control)	32 Tests 96 Tests	DNA (e.g. clinical specimen)	✓
Legionella species	MutaPLEX® Legionella species	KG191932 KG191996	<i>real time</i> PCR (offene Systeme) (+ Extraktionskontrolle)	32 Tests 96 Tests	DNA (e.g. clinical specimen)	✓
Nucleotide extraction	MutaCLEAN® Mag RNA/DNA	KG1023 or KG1024	Nucleotide Isolation Kit (magnet beads)	200 or 800 pre- parations	DNA/RNA (Stool)	✓
MRSA	MutaPLEX® MRSA	KG190332 KG190396	<i>real time</i> PCR (open systems) (+ extraction control)	32 Tests 96 Tests	DNA (swab from biological materials)	✓
MRSA: Community-acquired (CA), hospital-acquired (HA)	MutaPLEX® PVL-MRSA	KG190532 KG190596	<i>real time</i> PCR (open systems) (+ extraction control)	32 Tests 96 Tests	DNA (swab from biological materials)	✓
Mycobacterium tuberculosis (MTB)	MutaPLEX® MTB	KG190732 KG190796	<i>real time</i> PCR (open systems) (+ extraction control)	32 Tests 96 Tests	DNA (clinical specimen)	✓
Mycobact. tub. complex, non-tuberculous mycobact., mycobact. avium complex	MutaPLEX® MTB/NTM/MAC	KG190832 KG190896	<i>real time</i> PCR (open systems) (+ extraction control)	32 Tests 96 Tests	DNA (clinical specimen)	✓
MTHFR	MutaPLATE® MTHFR (TM)	KF1901432 KF1901496	<i>real time</i> PCR (open systems)	32 Tests 96 Tests	DNA (e.g. whole blood, cheek swab)	✓
MTHFR	MutaREAL® MTHFR (C677T)	KF291432-A KF291496-A	<i>real time</i> PCR (capillary system)	32 Tests 96 Tests	DNA (e.g. whole blood, cheek swab)	✓
MTHFR	MutaREAL® MTHFR (A1298C)	KF291432-B KF291496-B	<i>real time</i> PCR (capillary system)	32 Tests 96 Tests	DNA (e.g. whole blood, cheek swab)	✓
Mycoplasma hominis/genitalium	MutaPLEX® Mycoplasma hominis/genitalium	KSR190296	<i>real time</i> PCR (open systems) (+ extraction control)	96 Tests	DNA (from clinical specimen)	
Norovirus	MutaPLEX® Norovirus	KG190132 KG190196	<i>real time</i> RT-PCR (open systems) (+ extraction control)	32 Tests 96 Tests	RNA (Stool)	✓
PAI-1	MutaREAL® PAI-1	KF291932 KF291996	<i>real time</i> RT-PCR (capillary system)	32 Tests 96 Tests	RNA (Stool)	✓
Nucleotide extraction	MutaCLEAN® PLUS	KG1036	Nucleotide Isolation Kit (Lysisbuffer)	100 pre- parations	DNA (swab)	



Keyword	Product*	Cat. No.	Method	Tests	Matrix	CE
Prevotella., Rumino-coccus, Lachnospira-ceae	MutaPLEX® PRE/RU/LA	KG1913-96 KG1913-384	<i>real time</i> PCR (open systems) (+ extraction control)	96 Tests 384 Tests	DNA (e.g. clinical samples)	✓
Influenza viruses (A/B), Respiratory Syncytial viruses (A/B), SARS-CoV-2 viruses	MutaPLEX® RespiraScreen 1	KG192796 KG1927-384	<i>real time</i> RT-PCR (open systems) (+ extraction control)	96 Tests 384 Tests	RNA (biological samples)	✓
Influenza viruses (A/B), SARS-CoV-2 viruses	MutaPLEX® RespiraScreen 2 DIFF	KG192896 KG1928-384 KG1928-768	<i>real time</i> RT-PCR (open systems) (+ extraction control)	96 Tests 384 Tests 768 Tests	RNA (biological samples)	✓
Influenza viruses (A/B), SARS-CoV-2 viruses	MutaPLEX® RespiraScreen 3 DUO	KG192996 KG1929-384	<i>real time</i> RT-PCR (open systems) (+ extraction control)	96 Tests 384 Test	RNA (biological samples)	✓
Influenza A und B viruses, respiratory syncytial viruses	MutaPLEX® RespiraSys 1	KG198432 KG198496	<i>real time</i> RT-PCR (open systems) (+ extraction control)	32 Tests 96 Tests	RNA (clinical, environmental and food samples)	✓
Rickettsia	MutaPLEX® Rickettsia	KG192332 KG192396	<i>real time</i> PCR (open systems) (+ extraction control)	32 Tests 96 Tests	DNA (from tick or clinical samples)	✓
SARS-CoV-2 (E, S, RdRP gene)	MutaPLEX® SC2 multi gene	KG193096 KG1930-384 KG1930-768	<i>real time</i> RT-PCR (open systems) (+ extraction control)	96 Tests 384 Tests 768 Tests	RNA (biological samples)	✓
Detoxification enzymes	MutaCHIP® TOXO (COMT, CYBA, CYP, GST, NAT, SOD, MDR1)	KF391011 KF390011 KF390111	Gene-Chip with MAAT reader system	10 Chips 20 Chips 100Chips	DNA (e.g. whole blood, cheek swab)	✓
Thiopurine methyl-transferase	MutaREAL® TPMT	KF291332 KF291396	<i>real time</i> PCR (capillary system)	32 Tests 96 Tests	DNA (Stool)	✓
Treponema pallidum	MutaPLEX® Treponema pallidum	KSR191396	<i>real time</i> PCR (open systems) (+ extraction control)	96 Tests	DNA (from clinical specimen)	
Trichomatis vaginalis/ Gardnerella vaginalis	MutaPLEX® Trichomonas vaginalis/ Gardnerella vaginalis	KSR191296	<i>real time</i> PCR (open systems) (+ extraction control)	96 Tests	DNA (from clinical specimen)	
Zika virus, Chikungunya virus, Dengue virus 1-4, Yellow fever	MutaPLEX® Tropica 1	KG199032 KG199096	<i>real time</i> RT-PCR (open systems) (+ extraction control)	32 Tests 96 Tests	RNA (clinical samples)	✓
Ureaplasma urealyticum / parvum	MutaPLEX® Ureaplasma urealyticum/ parvum	KSR190396	<i>real time</i> PCR (open systems) (+ extraction control)	96 Tests	DNA (from clinical specimen)	
Uridine Diphosphoglucuronosyl Transferase 1A1	MutaREAL® UGT1A1	KF291832 KF291896	<i>real time</i> PCR (capillary system)	32 Tests 96 Tests	DNA (Food, Stool)	✓
Nucleotide extraction	MutaCLEAN® Universal RNA/DNA	KG1038	Nucleotide Isolation Kit (columns)	200 prep.	DNA and RNA	✓
Vitamin D ₃ receptor	MutaPLATE® VDR3/Bsm1 (TM)	KF1900432 KF1900496	<i>real time</i> PCR (open systems)	32 Tests 96 Tests	DNA (e.g. whole blood, cheek swab)	✓
Nucleotide extraction	MutaCLEAN® Virus	KG1025	Nucleotide Isolation Kit (ready-to-use magnet beads)	64 prep.	DNA and RNA	✓

*US: all products: Research Use Only. Not for use in diagnostic procedures.

Measurement in dried blood, dried urine, dried fecal samples

Food Intolerances

Neuro Stress

Skeletal System

Cardiovascular and Renal Systems

► Measurement in dried blood samples (DBS)

Product*	Cat. No.	Method	Tests	Matrix	CE
BCAA	K 7016DBS	colorimetric	96 Tests	dried blood	✓
CRP	K 9710s	ELISA	96 Tests	dried blood, Plasma, Serum, Urine, Stool	✓
CRP (1-point calibration)	K 9720s	ELISA	96 Tests	dried blood, Plasma, Serum, Urine, Stool	✓
IDK® Diamine Oxidase (DAO)	K 8500	ELISA	96 Tests	dried blood, Serum	✓
IDK® Diamine Oxidase (DAO) (1-point-calibration)	K 8510	ELISA	96 Tests	dried blood, Serum	✓
Histamine	K 8212	ELISA	96 Tests	dried blood, EDTA Plasma, Urine	✓
IDK® IDO activity	K 7726	ELISA	96 Tests	dried blood, Serum, EDTA Plasma	✓
IDK® Kynurenine	K 7728	ELISA	96 Tests	dried blood, EDTA Plasma, Serum	✓
ox-LDL/MDA Adduct <small>in US: FDA Class I Exempt Device. For In Vitro Diagnostic Use.</small>	K 7810	ELISA	96 Tests	dried blood, EDTA Plasma, Serum	✓
Nitrotyrosine	K 7829	ELISA	96 Tests	dried blood, EDTA Plasma, Serum	✓
IDK® Serotonin	K 6880	ELISA	96 Tests	dried blood, Serum	✓
IDK® Tryptophan	K 7730	ELISA	96 Tests	dried blood, Serum, EDTA Plasma	✓
DrySpot-ID®: Carrier for dried blood (4 Spots)	DZ9020ID		10		✓
DrySpot-ID®: Carrier for dried blood (2 Spots)	DZ9021ID		10		✓
D-Vital ID®: special carrier for the determination of Vitamin D (1 Spot)	DZ9025ID		10		✓

*US: all products: Research Use Only. Not for use in diagnostic procedures.

Measurement in dried blood, dried urine and dried fecal samples

► Measurement in dried urine samples (DUS)

Product*	Cat. No.	Method	Tests	Matrix	CE
GABA	KR7012	ELISA	96 Tests	dried urine, EDTA Plasma, Serum, Urine	
DrySpot-ID®: Carrier for dried urine	DZ9030ID		10		

*US: all products: Research Use Only. Not for use in diagnostic procedures.

► Measurement in dried fecal samples (DFS)

Product*	Cat. No.	Method	Tests	Matrix	CE
IDK® Calprotectin (MRP 8/14)	K 6927	ELISA	96 Tests	dried fecal extract, Stool	✓
IDK® Pancreatic Elastase	K 6915	ELISA	96 Tests	dried fecal extract, Stool	✓
DrySpot-ID®: Carrier for dried fecal samples (4 Spots)	DZ9050ID		10		✓
DrySpot-ID®: Carrier for dried fecal samples (2 Spots)	DZ9051ID		10		✓

*US: all products: Research Use Only. Not for use in diagnostic procedures.

Assay Register

A		
MutaREAL® ACE	KF290032/KF290096	real time PCR (capillary system) 5, 26
Adiponectin total	K 6250	ELISA 5
ADMA	K 7828	ELISA 5, 13
ADMA (Mouse/Rat)	KR3001	ELISA 5, 13
ADMA Xpress	K 7860	ELISA 5, 13
Advanced oxidation protein products (AOPP) (Cuvettes)	K 7811c	photometric 5, 13, 21
Advanced oxidation protein products (AOPP) (Microtiter plate)	KR7811w	photometric 5, 13, 21
MutaPLEX® AKM/FAEP (Akkermansia muciniphila, Faecalibacterium prausnitzii)	KG1911-96/ KG1911-384	real time PCR (open syst.)(+ extract. control) 8, 26
Albumin, human	K 6330	ELISA 5, 8
IDK® Prealbumin (Transthyretin)	K 6331	ELISA 8
MutaPLATE® Aldolase B (TM)	KF190432/KF190496	real time PCR (open systems) 8, 26
MutaPLATE® Aldolase B (A174D)	KF190432-B/KF190496-B	real time PCR (open systems) 8, 26
IDK® Amino Extract (Stool sample preparation system)	K 7999	12
Anti-Müllerian Hormone (AMH) [not available in Italy, UAE, Iran]	KKT804	ELISA 16, 21
IDK® α1-Antitrypsin (Alpha-1-Proteinase-Inhibitor)	K 6750	ELISA 8, 19
IDK® α1-Antitrypsin (Alpha-1-Proteinase-Inhibitor) (1-point calibration)	K 6760	ELISA 8, 19
IDK® α ₁ -Antitrypsin Clearance	K 6752	ELISA 8
MutaREAL® ApoE	KF290732/KF290796	real time PCR (capillary system) 5, 26
IDK® Arginine	KR7733	ELISA 5, 21
MutaPLEX® Atopobium vaginae/Gardnerella vaginalis	KSR191696	real time PCR (open syst.)(+ extract. control) 26
B		
MutaPLEX® Babesia	KG192432/KG192496	real time PCR (open syst.)(+ extract. control) 26
BCAA	K 7016	colorimetric 21
BCAA (in dried blood spots)	K 7016DBS	colorimetric 21, 30
IDK® Bile Acids (Serum)	K 7877W	photometric 8
IDK® Bile Acids (Serum) (Cuvette version)	K 7877CV	photometric 8
IDK® Bile Acids (Stool)	K 7878W	photometric 8
IDK® Bile Acids (Stool) (Cuvette version)	K 7878CV	photometric 8
IDK® Bile Acids (Stool) (DSX version)	K 7878DX	photometric 8
Biologic therapy monitoring → IDKmonitor®		
IDK® Biotin (vitamin H)	K 8141	ELISA 8, 21
ID-Vit® Biotin	KIF007	Direct MTP assay 21
MutaPLEX® Blastocystis	KG191896	real time PCR (open syst.)(+ extract. control) 26
MutaPLEX® Blastocystis ST-1-3-4-7	KG192132/KG192196	real time PCR (open syst.)(+ extract. control) 26
Bone Sialoprotein (BSP)	KR4222	ELISA 2, 17
MutaPLEX® Bordetella	KG190996/ KG190996	real time PCR (open syst.)(+ extract. control) 26
MutaPLEX® Borrelia	KG1917032/KG1917096	real time PCR (open syst.)(+ extract. control) 26
MutaPLEX® Borrelia/Rickettsia	KG194032/KG194096	real time PCR (open syst.)(+ extract. control) 26
C		
Calcium [not available in Japan]	KJCCA030	colorimetric 21
IDK® Calprotectin (MRP 8/14) (Urine)	K 6928	ELISA 8, 19
IDK® Calprotectin (MRP 8/14) (Serum, Plasma)	K 6935	ELISA 8, 19
IDK® Calprotectin (MRP 8/14) (Stool, dried fecal extracts)	K 6927	ELISA 8, 17, 19, 31
IDK® Calprotectin (MRP 8/14) (1-point calibration) (Stool)	K 6967	ELISA 8, 17, 19
MutaPLEX® Candida albicans/Fungi	KSR191496	real time PCR (open syst.)(+ extract. control) 26
MutaPLEX® Candida krusei/Candida glabrata	KSR191596	real time PCR (open syst.)(+ extract. control) 26
Carbonyl protein (Serum, Plasma)	K 7870	ELISA 5, 13
Carbonyl protein	KR7822	ELISA 5, 13
IDK® Casomorphin/Gliadorphin Peptides	KM8000	LC-MS/MS 9, 25
Centrifugal filtration concentrators	KR7822ZR	5, 13
MutaPLEX® Chlamydia trachomatis/Neisseria gonorrhoe	KSR190196	real time PCR (open syst.)(+ extract. control) 26
Chymotrypsin activity	K 6990	photometric 9
L-Citrulline	K 6600	colorimetric 13
MutaREAL® COMT	KF291532/ KF291596	real time PCR (capillary system) 26

Assay Register

Copper [not available in Japan]	KJCCU400	colorimetric	21
MutaPLEX® Coronavirus	KG192696/KG1926-384/KG1926-768	real time PCR (open syst.)(+ extract. control)	19, 27
MutaPLEX® Coronavirus 4G	KG193696/KG1936-384/KG1936-768	real time PCR (open syst.)(+ extract. control)	19, 27
MutaPLEX® CoV-2 MUT	KG193196	real time PCR (open syst.)(+ extract. control)	19, 27
MutaPLEX® CoV-2 MUT 2	KG193296	real time PCR (open syst.)(+ extract. control)	19, 27
MutaPLEX® CoV-2 MUT 3	KG193396	real time PCR (open syst.)(+ extract. control)	19, 27
CRP	K 9710s	ELISA	2, 5, 9, 13, 16, 19, 21, 30
CRP (1-point calibration)	K 9720s	ELISA	2, 5, 9, 13, 16, 19, 21, 30
MutaCHIP® CYP2D6 (cytochrome P450 2D6)	KF391005/KF390005/KF390105	Gene-Chip with MAAT reader system	27
MutaCHIP® CYP ⁺ (1A2, 2B6, 2C9, 2C19, 2D6, 3A4, 3A5, VKORC1)	KF391014/KF390014/KF390114	Gene-Chip with MAAT reader system	27
MutaPLATE® Cystic Fibrosis	KF190832/KF190896	real time PCR (open systems)	27

D

β-Defensin 2	K 6500	ELISA	9, 19
Delipidation Kit A	K 1003A		2
Delipidation Kit B	K 1003B		2
MutaCHIP® DERMA (Dermatophytes)	KFR390016 /KFR390116/KFR390316	Gene-Chip with MAAT reader system	27
IDK® Diamine Oxidase (DAO)	K 8500	ELISA	9, 30
IDK® Diamine Oxidase (DAO) (1-point-calibration)	K 8510	ELISA	9, 30
MutaREAL® DPD	KF291132/KF291196	real time PCR (capillary system)	27
MutaREAL® DPD-2	KF292032/KF292096	real time PCR (capillary system)	27
DrySpot-ID®: Carrier for dried blood (2 Spots)	DZ9021ID		30
DrySpot-ID®: Carrier for dried blood (4 Spots)	DZ9020ID		30
DrySpot-ID®: Carrier for dried fecal samples (2 Spots)	DZ9051ID		31
DrySpot-ID®: Carrier for dried fecal samples (4 Spots)	DZ9050ID		31
DrySpot-ID®: Carrier for dried urine	DZ9030ID		31
D-Vital ID®: special carrier for the determination of Vitamin D (1 Spot)	DZ9025ID		31

E

IDK® EDN (Eosinophil-derived Neurotoxin)	K 6811	ELISA	9, 19
IDK® EDN (Eosinophil-derived Neurotoxin) (1-point-calibration)	K 6821	ELISA	9, 19
MutaPLEX® Ehrlichia	KG192532/KG192596	real time PCR (open syst.)(+ extract. control)	27
MutaPLEX® Enterovirus	KG190232/KG190296	real time RT-PCR (open syst.)(+ extr. contr)	9, 27
MutaPLEX® EU/BAC/BIF (Eubacterium / Bacteroides / Bifidobacteria)	KG1912-96/ KG1912-384	real time PCR (open syst.)(+ extr. control)	9, 27

F

IDK® FABP2 (Fatty acid protein 2)	KR6809	ELISA	9
MutaPLATE® Factor II (TM)	KF1901632/KF1901696	real time PCR (open systems)	27
MutaREAL® Factor II	KF291632/KF291696	real time PCR (capillary system)	27
MutaPLATE® Factor V (TM)	KF1901732/KF1901796	real time PCR (open systems)	27
MutaREAL® Factor V	KF291732/KF291796	real time PCR (capillary system)	27
ID-Vit® Folic acid	KIF005	Direct MTP assay	5, 16, 21
MutaPLEX® FSME	KG1916032/KG1916096	real time RT-PCR (open syst.)(+ extr. contr)	27

G

GABA	KR7012	ELISA	13, 22, 31
GABA (Stool)	K 7009	ELISA	9, 21
MutaCHIP® GASTRO (Panel for human pathogens causing gastroenteritis)	KFR390015 /KFR390115/KFR390315	Gene-Chip with MAAT reader system	9, 27
MutaPLEX® GastroSys 1 (Adenovirus, norovirus, rotavirus)	KG198696	real time RT-PCR (open syst.)(+ extr. contr)	9, 27
MutaPLEX® GastroSys 3 (astrovirus, sapovirus, adenovirus, norovirus G-I and G-II, rotavirus)	KG198896	real time RT-PCR (open syst.)(+ extr. contr)	9, 27
MutaPLEX® GastroSys 4 (campylobacter, salmonella, shigella, yersinia)	KG1920-96	real time PCR (open syst.)(+ extr. contr)	9, 27
MutaPLEX® GBS (Group B Streptococci)	KG191096	real time PCR (open syst.)(+ extract. contr)	27
anti-Gliadin sIgA	K 9311	ELISA	9
IDK® Casomorphin/Gliadorphin Peptides	KM8000	LC-MS/MS	9, 26
Glutamate	on request		22
Glutamine	on request		22
Glutathione (GSH / GSSG)	KC1800	HPLC	13, 22, 24
Glycin	on request		22
MutaPLATE® GST-M1/T1 (TM)	KF1902132/KF1902196	real time PCR (open systems)	13, 17, 22, 27
MutaPLATE® GST-P1 (TM)	KF1903132/KF1903196	real time PCR (open systems)	13, 17, 22, 28

Assay Register

H		
Haptoglobin Typing [not available in Portugal and Spain]	KSA71001	ELISA 5, 14
IDK® Helicobacter pylori Antigen	K 6923	ELISA 9
IDK® Hemoglobin-Haptoglobin-Complex (Hb-Hp-Complex)	K 7817D	ELISA 9, 17
IDK® Hemoglobin-Haptoglobin-Complex (1-point calibration)	K 7837D	ELISA 9, 17
IDK® Hemoglobin, human (Hb)	K 7816D	ELISA 9, 17
IDK® Hemoglobin, human (1-point calibration)	K 7836D	ELISA 9, 17
Hepcidin-25 LC-MS/MS-Kit	KM4000	LC-MS/MS 25
MutaPLEX® Herpes simplex HSV1/2	KSR190496	real time PCR (open syst.)(+ extract. contr) 28
MutaREAL® HFE	KF291032/KF291096	real time PCR (capillary system) 9, 28
Histamine (EDTA Plasma, urine)	K 8212	ELISA 9, 22, 30
Histamine (Stool)	K 8213	ELISA 9, 22
MutaPLATE® HLA-DQ 2+8 (TM)	KF190532/KF190596	real time PCR (open systems) 28
MutaPLEX® HPV high risk (16/18)	KSR190696	real time PCR (open syst.)(+ extract. contr) 28
MutaPLEX® HPV high risk (31/33)	KSR190796	real time PCR (open syst.)(+ extract. contr) 28
MutaPLEX® HPV high risk (35/45)	KSR190896	real time PCR (open syst.)(+ extract. contr) 28
MutaPLEX® HPV low risk (6/11)	KSR190596	real time PCR (open syst.)(+ extract. contr) 28
MutaPLEX® HPV Screen	KSR191196	real time PCR (open syst.)(+ extract. contr) 28
MutaPLEX® HSV/VZV	KG190632/KG190696	real time PCR (open syst.)(+ extract. contr) 28
8-Hydroxydeoxyguanosine (8-OHdG)	KA4000	ELISA 13, 21
8-Hydroxydeoxyguanosine (8-OHdG)	KJKOGHS10E	ELISA 13, 21

I		
IDK Extract® (Stool sample preparation system)	K 6999	12
IDK® IDO activity	K 7726	ELISA 6, 17, 22, 30
IDKmonitor® Adalimumab drug level (e.g. Humira®)	K 9657	ELISA 2, 9, 19
IDKmonitor® Adalimumab free ADA (antibodies against adalimumab)	K 9652	ELISA 2, 9, 19
IDKmonitor® Adalimumab total ADA (total antibodies against adalimumab)	K 9651	ELISA 2, 9, 19
IDKmonitor® Certolizumab drug level (e.g. Cimzia®)	KR9662	ELISA 2, 9, 19
IDKmonitor® Etanercept drug level (e.g. Enbrel®)	K 9646	ELISA 2, 19
IDKmonitor® Etanercept free ADA (antibodies against etanercept)	K 9653	ELISA 2, 19
IDKmonitor® Golimumab drug level (antibodies against golimumab)	K 9656	ELISA 2, 9, 19
IDKmonitor® Golimumab free ADA (antibodies against golimumab)	K 9649	ELISA 2, 9, 19
IDKmonitor® Infliximab drug level (e.g. Remicade®)	K 9655	ELISA 2, 9, 19
IDKmonitor® Infliximab free ADA (antibodies against infliximab)	K 9650	ELISA 2, 10, 20
IDKmonitor® Infliximab total ADA (total antibodies against infliximab)	K 9654	ELISA 2, 10, 20
IDKmonitor® Rituximab drug level (e.g. MabThera®)	K 9661	ELISA 2, 20
IDKmonitor® Ustekinumab drug level (e.g. Stelara®)	K 9660	ELISA 10, 20
IDKmonitor® Ustekinumab free ADA (antibodies against ustekinumab)	K 9666	ELISA 10, 20
IDKmonitor® Ustekinumab total ADA (total antibodies against ustekinumab)	K 9667	ELISA 10, 20
IDKmonitor® Vedolizumab drug level (e.g. Entyvio®)	K 9658	ELISA 10, 20
IDKmonitor® Vedolizumab drug level (e.g. Entyvio®)	KM9600	LC-MS/MS 10, 20, 25
IDKmonitor® Vedolizumab free ADA (antibodies against vedolizumab)	K 9648	ELISA 10, 20
ID-Vit® Biotin	KIF007	Direct MTP assay 21
ID-Vit® Folic acid	KIF005	Direct MTP assay 5, 16, 21
ID-Vit® Niacin	KIF003	Direct MTP assay 6, 22
ID-Vit® Pantothenic acid	KIF004	Direct MTP assay 10, 22
ID-Vit® Vitamin B ₁	KIF001	Direct MTP assay 6, 23
ID-Vit® Vitamin B ₂	KIF002S	Direct MTP assay 23
ID-Vit® Vitamin B ₂	KIF002VB	Direct MTP assay 23
ID-Vit® Vitamin B ₆	KIF006	Direct MTP assay 7, 23
ID-Vit® Vitamin B ₁₂	KIF012	Direct MTP assay 7, 23
ImAnOx (TAS/TAC) (Antioxidative Capacity)	KC5200	colorimetric 14, 22
IDK® secretory Immunglobulin A (sIgA)	K 8870	ELISA 10, 20
IDK® secretory Immunglobulin A (sIgA) (1-point calibration)	K 8880	ELISA 10, 20
Immunglobulin E (IgE)	K 6511	ELISA 20
Immunglobulin G (IgG)	K 6510A	ELISA 6, 20
Iron	KJCFE005	colorimetric 22

K		
IDK® total α-Klotho	KR1700	ELISA 2, 6
Kryptopyrrole	K 7823	colorimetric 22
IDK® Kynurenine	K 7728	ELISA 6, 14, 17, 22, 30

Assay Register

IDK® Kynurenine high sensitive _____ KR3728 _____ ELISA _____ 6, 14, 17, 22
IDK® Kynureninic acid (KynA) _____ K 7735 _____ ELISA _____ 14, 22

L

Lactoferrin _____ K 6870 _____ ELISA _____ 10
MutaPLATE® Laktase (TM) _____ KF1907232/KF1907296 _____ real time PCR (open systems) _____ 10, 28
MutaREAL® Laktase _____ KF2907132/ KF2907196 _____ real time PCR (capillary system) _____ 28
MutaPLEX® Legionella pneumophila _____ KG196432/KG196496 _____ real time PCR (open syst.)(+ extract. contr) _____ 28
MutaPLEX® Legionella species _____ KG191932/191996 _____ real time PCR (open syst.)(+ extract. contr) _____ 28
Lysozyme (Stool) _____ K 6900 _____ ELISA _____ 10, 14, 20
Lysozyme (1-point calibration) (Stool) _____ K 6901 _____ ELISA _____ 10, 14, 20
Lysozyme (Serum, Urine, Liquor) _____ K 6902 _____ ELISA _____ 10, 14, 20
Lysozyme (1-point calibration) (Serum, Urine, Liquor) _____ K 6903 _____ ELISA _____ 10, 14, 20

M

α_2 -Macroglobulin (α_2 -M) _____ K 6610A _____ ELISA _____ 6
MutaCLEAN® Mag RNA/DNA (200 preparations) _____ KG1023 _____ Nucleotide Isolation Kit (magnet beads) _____ 28
MutaCLEAN® Mag RNA/DNA (800 preparations) _____ KG1024 _____ Nucleotide Isolation Kit (magnet beads) _____ 28
Magnesium _____ KJCMG035 _____ colorimetric _____ 22
Malondialdehyde (MDA) _____ KC1900 _____ HPLC _____ 14, 22, 24
 α_1 -Microglobulin (α_1 -M) _____ K 6710 _____ ELISA _____ 6
 β_2 -Microglobulin (β_2 -M) _____ K 6210 _____ ELISA _____ 6
MutaPLEX® MRSA _____ KG190332/KG190396 _____ real time PCR (open syst.)(+ extract. contr) _____ 28
MutaPLEX® PVL-MRSA _____ KG190532/KG190596 _____ real time PCR (open syst.)(+ extract. contr) _____ 28
MutaPLEX® MTB (Mycobacterium tuberculosis) _____ KG190732/ KG190796 _____ real time PCR (open syst.)(+ extract. contr) _____ 10, 28
MutaPLEX® MTB/NTM/MAC _____ KG190832/KG190896 _____ real time PCR (open syst.)(+ extract. contr) _____ 10, 28
MutaPLATE® MTHFR (TM) _____ KF1901432/KF1901496 _____ real time PCR (open systems) _____ 6, 28
MutaREAL® MTHFR (C677T) _____ KF291432-A/KF291496-A _____ real time PCR (capillary system) _____ 28
MutaREAL® MTHFR (A1298C) _____ KF291432-B/KF291496-B _____ real time PCR (capillary system) _____ 28
MutaPLEX® Mycoplasma hominis/genitalium _____ KSR190296 _____ real time PCR (open syst.)(+ extract. contr) _____ 28
IDK® Myeloperoxidase (MPO) _____ K 6631B _____ ELISA _____ 6, 10, 14, 20, 22
IDK® Myeloperoxidase (MPO) _____ K 6630 _____ ELISA _____ 10, 20
Myostatin _____ KR1012 _____ ELISA _____ 3

N

ID-Vit® Niacin _____ KIF003 _____ Direct MTP assay _____ 6, 22
Nitrotyrosine _____ K 7829 _____ ELISA _____ 6, 14, 22, 30
Nitrotyrosine _____ K 7824 _____ ELISA _____ 6, 14, 22
MutaPLEX® Norovirus _____ KG190132/KG190196 _____ real time RT-PCR (open syst.)(+ ex. contr) _____ 10, 28

Nucleotide isolation kits:

MutaCLEAN® Mag RNA/DNA (200 preparations) _____ KG1023 _____ Nucleotide Isolation Kit (magnet beads) _____ 28
MutaCLEAN® Mag RNA/DNA (800 preparations) _____ KG1024 _____ Nucleotide Isolation Kit (magnet beads) _____ 28
MutaCLEAN® PLUS _____ KG1036 _____ Nucleotide Isolation Kit (Lysisbuffer) _____ 28
MutaCLEAN® Universal RNA/DNA _____ KG1038 _____ Nucleotide Isolation Kit (columns) _____ 29
MutaCLEAN® Virus (64 preparations) _____ KG1025 _____ Nucleotide Isolation Kit (magnet beads) _____ 29

O

IDK® Oncostatin M _____ KR6926 _____ ELISA _____ 10
Osteonectin (ON) _____ KR4231 _____ ELISA _____ 3
IDK® Osteopontin _____ KR4235 _____ ELISA _____ 3
Osteoprotegerin Mouse/Rat _____ KR1020 _____ ELISA _____ 3, 6
Osteoprotegerin (OPG) _____ K 1011 _____ ELISA _____ 3, 6
ox-LDL Autoantibody (anti ox-LDL) _____ K 7809 _____ ELISA _____ 6, 14, 22
ox-LDL/MDA Adduct _____ K 7810 _____ ELISA _____ 6, 14, 22, 30

P

MutaREAL® PAI-1 _____ KF291932/ KF291996 _____ real time RT-PCR (capillary system) _____ 28
Pancreatic Amylase _____ K 6410 _____ ELISA _____ 10
IDK® Pancreatic Elastase _____ K 6915 _____ ELISA _____ 10, 31
ID-Vit® Pantothenic acid _____ KIF004 _____ Direct MTP assay _____ 10, 22

Assay Register

Paratrin ProLife®	K 1548	ELISA	3, 6
Phenylalanine	KR7014	ELISA	22
PerOx (TOS/TOC) (Oxidative Capacity)	KC5100	colorimetric	14, 22
MutaCLEAN® PLUS	KG1036	Nucleotide Isolation Kit (Lysisbuffer)	28
IDK® PMN-Elastase	K 6841	ELISA	10, 14, 16, 20
IDK® PMN-Elastase	K 6840	ELISA	10, 14, 16, 20
IDK® PMN-Elastase (1-point calibration)	K 6830	ELISA	10, 14, 16, 20
IDK® PMN-Elastase (1-point calibration)	K 6831	ELISA	10, 14, 16, 20
Porphyrins	KC2601	HPLC	24
MutaPLEX® PRE/RU/LA (Prevotella/Ruminococcus/Lachnospiraceae)	KG1913-96/ KG1913-384	real time PCR (open syst.)(+ extr. control)	10, 29
IDK® Prealbumin (Transthyretin)	K 6331	ELISA	8
Pregnenolone sulfate LC-MS/MS-Kit	KM2000	LC-MS/MS	22, 25
Protein quantification test (BCA method)	KR7822BCA		5, 13

Q

IDK® Quinolinic acid (QuinA)	K 7736	ELISA	14, 22
------------------------------	--------	-------	--------

R

sRANKL Mouse/Rat	K 1019	ELISA	3, 6
total sRANKL	K 1016	ELISA	3, 6
RBP/RBP4 Retinol-binding protein	K 6110	ELISA	6
RBP/RBP4 Retinol-binding protein (1-point calibration)	K 6120	ELISA	6
Relaxin	K 9210	ELISA	6, 16
Resistin	on request		6, 11
MutaPLEX® RespiraScreen 1	KG192796/KG1927-384	real time RT-PCR (open syst.)(+ extrt. contr)	20, 29
MutaPLEX® RespiraScreen 2 DIFF	KG192896/KG1928-384/KG1928-768	real time RT-PCR (open syst.)(+ extrt. contr)	20, 29
MutaPLEX® RespiraScreen 3 DUO	KG192996/ KG1929-384	real time RT-PCR (open syst.)(+ extrt. contr)	20, 29
MutaPLEX® RespiraSys 1	KG198496	real time RT-PCR (open syst.)(+ extract. contr)	29
MutaPLEX® Rickettsia	KG192332/KG192396	real time PCR (open syst.)(+ extract. control)	29

S

S100A8/A9 MRP8/14, Calprotectin (Mouse/Rat)	KR6936	ELISA	6, 8, 17, 19
IDK® S100A12 (Calgranulin C, EN-RAGE)	K 6938	ELISA	8, 17, 19
IDK® S100A12 (Calgranulin C, EN-RAGE)	K 6939	ELISA	8, 17, 20
Sample preparation tube	K 6997SR		12
IDK® anti-SARS-CoV-2 IgG	K 5000	ELISA	20
IDK® anti-SARS-CoV-2 IgG quantitative	K 5004	ELISA	20
IDK® anti-SARS-CoV-2 IgM	K 5001	ELISA	20
MutaPLEX® SC2 multi gene	KG193096	real time RT-PCR (open syst.)(+ extrt. contr)	20, 29
SDMA	K 7780	ELISA	6, 14
IDK® Serotonin (Serum, dried blood)	K 6880	ELISA	11, 14, 22, 30
IDK® Serotonin (Stool)	K 6881	ELISA	11, 14, 22
Stool sample preparation system (filled with extraction buffer IDK Extract®)	K 6999		12
Stool sample preparation system (filled with extraction buffer IDK® Amino Extract)	K 7999		12
Stool sample preparation system (filled with extraction buffer IDK® TurbiTUBE®)	TU00091.A		12
Stool sample preparation system (unfilled)	K 6998SAS		12

T

Thiol status (Sulfhydryl status test)	K 1800	colorimetric	14, 22
Thymosin α_1	KR9510	ELISA	16, 17, 20
Thymosin β_4	KR9520	ELISA	16, 17, 20
Thymulin	KR9810	ELISA	16, 20
IDK® TNF α (Tumor Necrosis Factor α)	K 9610	ELISA	3, 11, 17, 20
TNF α Monitoring $\rightarrow \rightarrow$ IDKmonitor®			
MutaCHIP® TOXO (COMT, CYBA, CYP, GST, NAT, SOD, MDR1)	KF391011/KF390011/KF390111	Gene-Chip with MAAT reader system	14, 29
anti-human epidermal Transglutaminase IgA (anti-heTG IgA)	K 9396	ELISA	3, 11, 16
IDK® anti-human neuronal Transglutaminase IgA (anti-hnTG IgA anti-TG6 IgA)	K 9400	ELISA	11
IDK® anti-human neuronal Transglutaminase IgG (anti-hnTG IgA anti-TG6 IgA)	K 9401	ELISA	11
anti-human tissue Transglutaminase IgA (anti-htTG IgA)	K 9399	ELISA	3, 11, 16
anti-human tissue Transglutaminase slgA (anti-htTG slgA)	K 9393	ELISA	3, 11, 16
MutaREAL® TPMT	KF291332/ KF291396	real time PCR (capillary system)	29
MutaPLEX® Treponema pallidum	KSR191396	real time PCR (open syst.)(+ extract. contr)	29
MutaPLEX® Trichomonas vaginalis/Gardnerella vaginalis	KSR191296	real time PCR (open syst.)(+ extract. contr)	29

Assay Register

MutaPLEX® Tropica 1	KG199032/ KG199096	real time RT-PCR (open syst.)(+ extr. contr)	29
IDK® Tryptase	KR6814	ELISA	11
IDK® Tryptophan	K 7729	ELISA	11, 14, 23
IDK® Tryptophan	K 7730	ELISA	11, 14, 23, 30
IDK® Tryptophan high sensitive	KR3730	ELISA	11, 14, 23
IDK® TurbiCAL® (Calprotectin)	TU1021.1/TU1012.2/TU1021.8	Turbidimetry/PETIA	11
IDK® TurbiFIT® (Hemoglobin)	TU1031.1/TU1031.2/TU1031.8	Turbidimetry/PETIA	11, 18
IDK® TurbiPEL® (Pancreatic Elastase)	TU1011.1/TU1011.2/TU1011.8	Turbidimetry/PETIA	11
IDK® TurbiTUBE® (Stool sample preparation system)	TU00091.A		12
Tyrosine	KR7015	ELISA	23

U

Ubiquinone / Coenzyme Q ₁₀	KC1700	HPLC	14, 23, 24
MutaREAL® UGT1A1	KF291832/ KF291896	real time PCR (capillary system)	29
MutaCLEAN® Universal RNA/DNA	KG1038	Nucleotide Isolation Kit (columns)	28
MutaPLEX® Ureaplasma urealyticum/parvum	KSR190396	real time PCR (open syst.)(+ extr. contr)	29
Urotensin II	on request		7

V

MutaCLEAN® Virus (64 preparations)	KG1025	Nucleotide Isolation Kit (magnet beads)	28
Vitamin A/E (Retinol / Tocopherol)	KC1600	HPLC	6, 11, 15, 23, 24
ID-Vit® Vitamin B ₁	KIF001	Direct MTP assay	6, 23
Vitamin B ₁ (Thiaminpyrophosphate)	KC2201	HPLC	6, 11, 24
ID-Vit® Vitamin B ₂	KIF002S	Direct MTP assay	23
ID-Vit® Vitamin B ₂	KIF002VB	Direct MTP assay	23
ID-Vit® Vitamin B ₆	KIF006	Direct MTP assay	7, 23
Vitamin B ₆ (Pyridoxal-5-Phosphate)	KC2100	HPLC	7, 11, 24
Vitamin B ₆ (Pyridoxal-5-Phosphate)	KC2150	HPLC	7, 11, 24
ID-Vit® Vitamin B ₁₂	KIF012	Direct MTP assay	7, 23
IDK® Vitamin C	K 4000	colorimetric	7, 11, 15, 23
Vitamin C (Ascorbic acid)	KC2900	HPLC	7, 11, 15, 23, 24
1,25(OH) ₂ -Vitamin D	K 2112	ELISA	3
1,25(OH) ₂ -Vitamin D ₃ /D ₂ ImmuTube®LC-MS/MS Kit	KM1000	LC-MS/MS	3, 25
1,25(OH) ₂ -Vitamin D ₃ /D ₂ ImmuTube® Extraction Kit	KM1100	Extraction	3, 25
1,25(OH) ₂ -Vitamin D Columns	Se2112		3
1,25(OH) ₂ -Vitamin D Extraction Rack	K 2221extr		3
1,25(OH) ₂ -Vitamin D Nitrogen Distributor	K 2221sv		3
1,25(OH) ₂ -Vitamin D Nitrogen Distributo (separately)	K 2221svez		3
1,25(OH) ₂ -Vitamin D Silicia Cartridges	Sb2221		3
25-OH-Vitamin D	K 2020	ELISA	3, 23
25(OH)-Vitamin D ₃ / D ₂ Reversed Phase	KC3000	HPLC	3, 11, 23, 25
MutaPLATE® VDR3/Bsm1 (TM)	KF1900432/KF1900496	real time PCR (open systems)	3, 29
Vitamin D binding Protein (VDBP)	K 2314	ELISA	3
ImmuTube® Vitamin D duo LC-MS/MS Kit	KM1310	LC-MS/MS	3, 25
ImmuTube® Vitamin D duo LC-MS/MS Extraktionskit	KM1311	LC-MS/MS	3, 25
IDK magnetics® Vitamin D duo LC-MS/MS Kit	KM1320	LC-MS/MS	4, 25
IDK magnetics® Vitamin D duo LC-MS/MS Extraktionskit	KM1321	LC-MS/MS	4, 25
Vitamin K ₁ (Phylloquinone)	KC2400	HPLC	4, 11, 23, 24

Z

Zinc	KJCZN001	colorimetric	23
Zinc-Protoporphyrin / Protoporphyrin	KC2700	HPLC	25
IDK® Zonulin	K 5600	ELISA	7, 11
IDK® Zonulin	K 5601	ELISA	7, 11

Alphanumeric Register

Cat. No.	Product Name	Page
DZ9020ID	DrySpot-ID®: Carrier for dried blood (4 Spots)	30
DZ9021ID	DrySpot-ID®: Carrier for dried blood (2 Spots)	30
DZ9025ID	D-Vital ID®: special carrier for the determination of Vitamin D (1 Spot)	30
DZ9030ID	DrySpot-ID®: Carrier for dried urine	31
DZ9050ID	DrySpot-ID®: Carrier for dried fecal samples (4 Spots)	31
DZ9051ID	DrySpot-ID®: Carrier for dried fecal samples (2 Spots)	31
K 1003A	Delipidation Kit A	2
K 1003B	Delipidation Kit B	2
K 1016	total sRANKL	3, 6
K 1019	sRANKL Mouse/Rat	3, 6
K 1800	Thiol status (Sulfhydryl status test)	14, 22
K 2020	25(OH)-Vitamin D (ELISA)	3, 23
K 2020DBS	25(OH)-Vitamin D dried blood	3, 23, 30
K 2112	1,25(OH)2-Vitamin D	3
K 2221extr	1,25(OH)2-Vitamin D Extraction Rack (consisting of 3 parts)	3
K 2221sv	1,25(OH)2-Vitamin D Nitrogen Distributor	3
K 2221svez	1,25(OH)2-Vitamin D Nitrogen Distributor (separately)	3
K 2314	Vitamin D binding Protein (VDBP)	3
K 4000	IDK® Vitamin C	7, 11, 15, 23
K 5000	IDK® anti-SARS-CoV-2 IgG	20
K 5001	IDK® anti-SARS-CoV-2 IgM	20
K 5004	IDK® anti-SARS-CoV-2 IgG <i>quantitative</i>	20
K 5600	IDK® Zonulin	7, 11
K 5601	IDK® Zonulin	7, 11
K 6110	Retinol binding Protein (RBP4)	6
K 6120	Retinol binding Protein (RBP4) (1-point calibration)	6
K 6210	β ₂ -Microglobulin (β ₂ -M)	6
K 6250	Adiponectin total	5
K 6330	Albumin, human	5, 8
K 6331	IDK® Prealbumin (Transthyretin)	8
K 6410	Pancreatic Amylase	10
K 6500	β-Defensin 2	9, 19
K 6510A	Immunglobulin G (IgG)	6, 20
K 6511	Immunglobulin E (IgE)	20
K 6600	L-Citrulline	13
K 6610A	α ₂ -Macroglobulin (α ₂ -M)	6
K 6630	IDK® Myeloperoxidase (MPO)	10, 20

Cat. No.	Product Name	Page
K 6631B	IDK® Myeloperoxidase (MPO)	6, 10, 14, 20, 22
K 6710	α ₁ -Microglobulin (α ₁ -M)	6
K 6750	IDK® α ₁ -Antitrypsin (Alpha-1-Proteinase-Inhibitor)	8, 19
K 6752	IDK® α ₁ -Antitrypsin Clearance	8
K 6760	IDK® α ₁ -Antitrypsin (Alpha-1-Proteinase-Inhibitor) (1-point calibration)	8, 19
K 6811	IDK® EDN (Eosinophil-derived Neurotoxin)	9, 19
K 6821	IDK® EDN (1-point-calibration)	9, 19
K 6830	IDK® PMN-Elastase (1-point calibration)	10, 14, 16, 20
K 6831	IDK® PMN-Elastase (1-point calibration)	10, 14, 16, 20
K 6840	IDK® PMN-Elastase	10, 14, 16, 20
K 6841	IDK® PMN-Elastase	10, 14, 16, 20
K 6870	Lactoferrin	10
K 6880	IDK® Serotonin (Serum, dried blood)	11, 14, 22, 30
K 6881	IDK® Serotonin (Stool)	11, 14, 22
K 6900	Lysozyme (Stool)	10, 14, 20
K 6901	Lysozyme (1-point calibration) (Stool)	10, 14, 20
K 6902	Lysozyme (Serum, Urine, Liquor)	10, 14, 20
K 6903	Lysozyme (1-point calibration) (Serum, Urine, Liquor)	10, 14, 20
K 6915	IDK® Pancreatic Elastase	10, 31
K 6923	IDK® Helicobacter pylori Antigen	9
K 6927	IDK® Calprotectin (MRP 8/14) (Stool, dried fecal extracts)	8, 17, 19, 31
K 6928	IDK® Calprotectin (MRP 8/14) (Urine)	8, 19
K 6935	IDK® Calprotectin (MRP 8/14) (Serum, Plasma)	8, 19
K 6938	IDK® S100A12 (Calgranulin C, EN-RAGE)	8, 17, 19
K 6939	IDK® S100A12 (Calgranulin C, EN-RAGE)	8, 17, 20
K 6967	IDK® Calprotectin (MRP 8/14) (1-point calibration) (Stool)	8, 17, 19
K 6990	Chymotrypsin activity	9
K 6997SR	Sample preparation tube	12
K 6998SAS	Stool sample preparation system (unfilled)	12
K 6999	Stool sample preparation system filled with extraction buffer <i>IDK Extract®</i>	12
K 7009	GABA (Stool)	9

Alphanumeric Register

Cat. No.	Product Name	Page
K 7016	BCAA	21
K 7016DBS	BCAA (in dried blood spots)	21, 30
K 7726	IDK® IDO activity	6, 17, 22, 30
K 7728	IDK® Kynurenine	6, 14, 17, 22, 30
K 7729	IDK® Tryptophan	11, 14, 23
K 7730	IDK® Tryptophan	11, 14, 23, 30
K 7735	IDK® Kynurenic acid (KynA)	14, 22
K 7736	IDK® Quinolinic acid (QuinA)	14, 22
K 7780	SDMA	6, 14
K 7809	ox-LDL Autoantibody (anti-ox-LDL)	6, 14, 22
K 7810	ox-LDL/MDA Adduct	6, 14, 22, 30
K 7811c	Advanced oxidation protein products (AOPP) (Cuvettes)	5, 13, 21
K 7816D	IDK® Hemoglobin, human (Hb)	9, 17
K 7817D	IDK® Hemoglobin-Haptoglobin-Complex (Hb-Hp-Complex)	9, 17
K 7823	Kryptopyrrole	22
K 7824	Nitrotyrosine	6, 14, 22
K 7828	ADMA	5, 13
K 7829	Nitrotyrosine	6, 14, 22, 30
K 7836D	IDK® Hemoglobin, human (1-point calibration)	9, 17
K 7837D	IDK® Hemoglobin-Haptoglobin-Complex (1-point calibration)	9, 17
K 7860	ADMA Xpress	5, 13
K 7870	Carbonyl protein	5, 13
K 7877CV	IDK® Bile Acids (Serum) (Cuvette version)	8
K 7877W	IDK® Bile Acids (Serum)	8
K 7878CV	IDK® Bile Acids (Stool) (Cuvette version)	8
K 7878DX	IDK® Bile Acids (Stool) (DSX version)	8
K 7878W	IDK® Bile Acids (Stool)	8
K 7999	Stool sample preparation system filled with extraction buffer <i>IDK® Amino Extract</i>	12
K 8141	IDK® Biotin (vitamin H)	8, 21
K 8212	Histamine (EDTA Plasma, urine)	9, 22, 30
K 8213	Histamine (Stool)	9, 22
K 8500	IDK® Diamine Oxidase (DAO)	9, 30
K 8510	IDK® Diamine Oxidase (DAO) (1-point-calibration)	9, 30
K 8870	IDK® secretory Immunglobulin A (sIgA)	10, 20
K 8880	IDK® secretory Immunglobulin A (sIgA) (1-point calibration)	10, 20
K 9210	Relaxin	6, 16

Cat. No.	Product Name	Page
K 9311	anti-Gliadin sIgA	9
K 9393	anti-human tissue Transglutaminase sIgA (anti-htTG sIgA)	3, 11, 16
K 9396	anti-human epidermal Transglutaminase IgA (anti-heTG IgA)	3, 11, 16
K 9399	anti-human tissue Transglutaminase IgA (anti-htTG IgA)	3, 11, 16
K 9400	IDK® anti-human neuronal Transglutaminase IgA (anti-hnTG IgA anti-TG6 IgA)	11
K 9401	IDK® anti-human neuronal Transglutaminase IgG (anti-hnTG IgG anti-TG6 IgG)	11
K 9610	IDK® TNF α (Tumor Necrosis Factor α)	3, 11, 17, 20
K 9646	IDKmonitor® Etanercept drug level (e.g. Enbrel®)	2, 19
K 9648	IDKmonitor® Vedolizumab free ADA (antibodies against vedolizumab)	10, 20
K 9649	IDKmonitor® Golimumab free ADA (antibodies against golimumab)	2, 9, 19
K 9650	IDKmonitor® Infliximab free ADA (antibodies against infliximab)	2, 10, 20
K 9651	IDKmonitor® Adalimumab total ADA (total antibodies against adalimumab)	2, 9, 19
K 9652	IDKmonitor® Adalimumab free ADA (antibodies against adalimumab)	2, 9, 19
K 9653	IDKmonitor® Etanercept free ADA (antibodies against etanercept)	2, 19
K 9654	IDKmonitor® Infliximab total ADA (total antibodies against infliximab)	2, 10, 20
K 9655	IDKmonitor® Infliximab drug level (e.g. Remicade®)	2, 9, 19
K 9656	IDKmonitor® Golimumab drug level (e.g. Simponi®)	2, 9, 19
K 9657	IDKmonitor® Adalimumab drug level (e.g. Humira®)	2, 9, 19
K 9658	IDKmonitor® Vedolizumab drug level (e.g. Entyvio®)	10, 20
K 9660	IDKmonitor® Ustekinumab drug level (e.g. Stelara®)	10, 20
K 9661	IDKmonitor® Rituximab drug level (e.g. MabThera®)	2, 20
K 9666	IDKmonitor® Ustekinumab free ADA (antibodies against ustekinumab)	10, 20
K 9667	IDKmonitor® Ustekinumab total ADA (total antibodies against ustekinumab)	10, 20
K 9710s	CRP	2, 5, 9, 13, 16, 19, 21, 30
K 9720s	CRP (1-point calibration)	2, 5, 9, 13, 16, 19, 21, 30
KA4000	8-Hydroxydeoxyguanosine (8-OHdG)	13, 21

Alphanumeric Register

Cat. No.	Product Name	Page
KC1600	Vitamin A/E (Retinol / Tocopherol)	6, 11, 15, 23, 24
KC1700	Ubiquinone / Coenzyme Q10	14, 23, 24
KC1800	Glutathione (GSH / GSSG)	13, 22, 24
KC1900	Malondialdehyde (MDA)	14, 22, 24
KC2100	Vitamin B6 (Pyridoxal-5-Phosphate)	7, 11, 24
KC2150	Vitamin B6 (Pyridoxal-5-Phosphate)	7, 11, 24
KC2201	Vitamin B1 (Thiaminpyrophosphate)	6, 11, 24
KC2400	Vitamin K1 (Phylloquinone)	4, 11, 23, 24
KC2601	Porphyrins	24
KC2700	Zinc-Protoporphyrin / Protoporphyrin	25
KC2900	Vitamin C (Ascorbic acid)	7, 11, 15, 23, 24
KC3000	25(OH)-Vitamin D3 / D2 Reversed Phase	3, 11, 23, 25
KC5100	PerOx (TOS/TOC) (Oxidative Capacity)	14, 22
KC5200	ImAnOx (TAS/TAC) (Antioxidative Capacity)	14, 22
KF1900432 KF1900496	MutaPLATE® VDR3/Bsm1 (TM)	3, 29
KF1901432 KF1901496	MutaPLATE® MTHFR (TM)	6, 28
KF1901632 KF1901696	MutaPLATE® Factor II (TM)	27
KF1901732 KF1901796	MutaPLATE® Factor V (TM)	27
KF1902132 KF1902196	MutaPLATE® GST-M1/T1 (TM)	13, 17, 22, 27
KF1903132 KF1903196	MutaPLATE® GST-P1 (TM)	13, 17, 22, 28
KF190432 KF190496	MutaPLATE® Aldolase B (TM)	8, 26
KF190432-B KF190496-B	MutaPLATE® Aldolase B (A174D)	8, 26
KF190532 KF190596	MutaPLATE® HLA-DQ 2+8 (TM)	28
KF1907232 KF1907296	MutaPLATE® Laktase (TM)	10, 28
KF290032 KF290096	MutaREAL® ACE	5, 26
KF2907132 KF2907196	MutaREAL® Laktase	28
KF290732 KF290796	MutaREAL® ApoE	5, 26
KF291032 KF291096	MutaREAL® HFE	9, 28
KF291132 KF291196	MutaREAL® DPD	27
KF291332 KF291396	MutaREAL® TPMT	29
KF291432-A KF291496-A	MutaREAL® MTHFR (C677T)	28

Cat. No.	Product Name	Page
KF291432-B KF291496-B	MutaREAL® MTHFR (A1298C)	28
KF291532 KF291596	MutaREAL® COMT	26
KF291632 KF291696	MutaREAL® Factor II	27
KF291732 KF291796	MutaREAL® Factor V	27
KF291832 KF291896	MutaREAL® UGT1A1	29
KF291932 KF291996	MutaREAL® PAI-1	28
KF292032 KF292096	MutaREAL® DPD-2	27
KF391005 KF390005 KF390105	MutaCHIP® CYP2D6 (cytochrome P450 2D6)	27
KF391011 KF390011 KF390111	MutaCHIP®TOXO (COMT, CYBA, CYP, GST, NAT, SOD, MDR1)	14, 29
KF391014 KF390014 KF390114	MutaCHIP® CYP+ (1A2, 2B6, 2C9, 2C19, 2D6, 3A4, 3A5, VKORC1)	27
KFR390015 KFR390115 KFR390315	MutaCHIP® GASTRO (Panel for human pathogens causing gastroenteritis)	9, 27
KFR390016 KFR390116 KFR390316	MutaCHIP® DERMA (Dermatophytes)	27
KG1023	MutaCLEAN® Mag RNA/DNA (200 preparations)	28
KG1024	MutaCLEAN® Mag RNA/DNA (800 preparations)	28
KG1025	MutaCLEAN® Virus	29
KG1036	MutaCLEAN® PLUS	28
KG1038	MutaCLEAN® Universal RNA/DNA	29
KG190132 KG190196	MutaPLEX® Norovirus	10, 28
KG190232 KG190296	MutaPLEX® Enterovirus	9, 27
KG190332 KG190396	MutaPLEX® MRSA	28
KG190532 KG190596	MutaPLEX® PVL-MRSA	28
KG190632 KG190696	MutaPLEX® HSV/VZV	28
KG190732 KG190796	MutaPLEX® MTB (Mycobacterium tuberculosis)	10, 28
KG190896 KG190832	MutaPLEX® MTB/NTM/MAC	10, 28
KG190996	MutaPLEX® Bordetella	26
KG191096	MutaPLEX® GBS (Group B Streptococci)	27
KG1911-96 KG1911-384	MutaPLEX® AKM/FAEP (Akermansia muciniphila, Faecalibacterium prausnitzii)	8, 26
KG1912-96 KG1912-384	MutaPLEX® EU/BAC/BIF (Eubacterium / Bacteroides / Bifidobacteria)	9, 27

Alphanumeric Register

Cat. No.	Product Name	Page
KG1913-96 KG1913-384	MutaPLEX® PRE/RU/LA (Prevotella/Ruminococcus/Lachnospiraceae)	10, 29
KG1916032 KG1916096	MutaPLEX® FSME	27
KG1917032 KG1917096	MutaPLEX® Borrelia	26
KG191896	MutaPLEX® Blastocystis	26
KG191932 KG191996	MutaPLEX® Legionella species	28
KG1920-96 KG1920-384	MutaPLEX® GastroSys 4 (campylobacter, salmonella, shigella, yersinia)	9, 27
KG192132 KG192196	MutaPLEX® Blastocystis ST-1-3-4-7	26
KG192332 KG192396	MutaPLEX® Rickettsia	29
KG192432 KG192496	MutaPLEX® Babesia	26
KG192532 KG192596	MutaPLEX® Ehrlichia	27
KG192696 KG1926-384 KG1926-768	MutaPLEX® Coronavirus	19, 27
KG192796 KG1927-384	MutaPLEX® Respira Screen 1	20, 29
KG192896 KG1928-384 KG1928-768	MutaPLEX® Respira Screen 2 DIFF	20, 29
KG192996 KG1929-384	MutaPLEX® Respira Screen 3 DUO	20, 29
KG193096 KG1930-384 KG1930-768	MutaPLEX® SC2 multi gene	20, 29
KG193196	MutaPLEX® CoV-2 MUT	19, 27
KG193296	MutaPLEX® CoV-2 MUT 2	27
KG193396	MutaPLEX® CoV-2 MUT 3	27
KG193696 KG1936-384 KG1936-768	MutaPLEX® Coronavirus 4G	27
KG194032 KG194096	MutaPLEX® Borrelia/Rickettsia	26
KG196432 KG196496	MutaPLEX® Legionella pneumophila	28
KG198432 KG198496	MutaPLEX® RespiraSys 1	29
KG198632 KG198696	MutaPLEX® GastroSys 1 (Adenovirus, norovirus, rotavirus)	9, 27
KG198832 KG198896	MutaPLEX® GastroSys 3 (astrovirus, sapovirus, adenovirus, norovirus G-I and G-II, rotavirus)	9, 27
KG199032 KG199096	MutaPLEX® Tropica 1	29
KIF001	ID-Vit® Vitamin B ₁	6, 23
KIF002S	ID-Vit® Vitamin B ₂	23
KIF002VB	ID-Vit® Vitamin B ₂	23
KIF003	ID-Vit® Niacin	6, 22
KIF004	ID-Vit® Pantothenic acid	10, 22
KIF005	ID-Vit® Folic acid	5,16,21

Cat. No.	Product Name	Page
KIF006	ID-Vit® Vitamin B ₆	7, 23
KIF007	ID-Vit® Biotin	21
KIF012	ID-Vit® Vitamin B ₁₂	7, 23
KJCCA030	Calcium [not available in Japan]	21
KJCCU400	Copper [not available in Japan]	21
KJCFE005	Iron [not available in Japan]	22
KJCMG035	Magnesium [not available in Japan]	22
KJCZN001	Zinc [not available in Japan]	23
KJKOGHS10E	8-Hydroxydeoxyguanosine (8-OHdG)	13, 21
KKT804	Anti-Müllerian Hormone (AMH) [not available in Italy, UAE, Iran]	16, 21
KM1000	1,25(OH) ₂ -Vitamin D ₃ /D ₂ ImmuTube® LC-MS/MS Kit	3, 26
KM1100	1,25(OH) ₂ -Vitamin D ₃ /D ₂ ImmuTube® Extraction Kit	3, 26
KM1310	ImmuTube® Vitamin D duo LC-MS/MS Kit	3, 26
KM1311	ImmuTube® Vitamin D duo LC-MS/MS Extraction kit	3, 26
KM1320	IDK magnetics® Vitamin D duo LC-MS/MS Kit	4, 26
KM1321	IDK magnetics® Vitamin D duo LC-MS/MS Extraction kit	4, 26
KM2000	Pregnenolone sulfate LC-MS/MS-Kit	22, 26
KM4000	Hepcidin-25 LC-MS/MS-Kit	26
KM8000	IDK® Casomorphin/Gliadorphin Peptides	9, 26
KM9600	IDKmonitor® Vedolizumab drug level (e.g. Entyvio®)	10, 20, 26
KR1011	Osteoprotegerin (OPG)	3, 6
KR1012	Myostatin	3
KR1020	Osteoprotegerin Mouse/Rat	3, 6
KR1548	Paratrin ProLife®	3, 6
KR1700	IDK® total α-Klotho	2, 6
KR3001	ADMA (Mouse/Rat)	5, 13
KR3728	IDK® Kynurenine high sensitive	6, 14, 17, 22
KR3730	IDK® Tryptophan high sensitive	11, 14, 23
KR4222	Bone Sialoprotein (BSP)	2, 17
KR4231	Osteonectin (ON)	3
KR4235	IDK® Osteopontin	3
KR6809	IDK® FABP2 (Fatty acid protein)	9
KR6814	IDK® Tryptase	11
KR6926	IDK® Oncostatin M	10
KR6936	S100A8/A9 MRP8/14, Calprotectin (Mouse/Rat)	6, 8, 17, 19
KR7012	GABA	13, 21, 31
KR7014	Phenylalanine	22
KR7015	Tyrosine	23
KR7733	IDK® Arginine	5, 21

Alphanumeric Register

Cat. No.	Product Name	Page
KR7811w	Advanced oxidation protein products (AOPP) (Microtiter plate)	5, 13, 21
KR7822	Carbonyl proteins	5, 13
KR7822BCA	Protein quantification test (BCA method)	5, 13
KR7822ZR	Centrifugal filtration concentrators	5, 13
KR9510	Thymosin α_1	16, 17, 20
KR9520	Thymosin β_4	16, 17, 20
KR9810	Thymulin	16, 20
KR9662	IDKmonitor [®] Certolizumab drug level (e.g. Cimzia [®])	2, 9, 19
KSA71001	Haptoglobin Typing [not available in Portugal and Spain]	5, 14
KSR190196	MutaPLEX [®] Chlamydia trachomatis/Neisseria gonorrhoe	26
KSR190296	MutaPLEX [®] Mycoplasma hominis/genitalium	28
KSR190396	MutaPLEX [®] Ureaplasma urealyticum/ parvum	29
KSR190496	MutaPLEX [®] Herpes simplex HSV1/2	28
KSR190596	MutaPLEX [®] HPV low risk (6/11)	28
KSR190696	MutaPLEX [®] HPV high risk (16/18)	28
KSR190796	MutaPLEX [®] HPV high risk (31/33)	28
KSR190896	MutaPLEX [®] HPV high risk (35/45)	28
KSR191196	MutaPLEX [®] HPV Screen	28
KSR191296	MutaPLEX [®] Trichomonas vaginalis / Gardnerella vaginalis	29
KSR191396	MutaPLEX [®] Treponema pallidum	29
KSR191496	MutaPLEX [®] Candida albicans/ Fungi	26
KSR191596	MutaPLEX [®] Candida krusei/ Candida glabrata	26
KSR191696	MutaPLEX [®] Atopobium vaginae/Gardnerella vaginalis	26
Sb2221	1,25(OH)2-Vitamin D Silicia Cartridges	3
Se2112	1,25(OH)2-Vitamin D Columns	3
TU0091.A	Stool sample preparation system filled with extraaction buffer <i>IDK</i> [®] TurbiTUBE [®]	12
TU1011.1 TU1011.2 TU1011.8	<i>IDK</i> [®] TurbiPEL [®] (Pancreatic Elastase)	11
TU1021.1 TU1021.2 TU1021.8	<i>IDK</i> [®] TurbiCAL [®] (Calprotectin)	11
TU1031.1 TU1031.2 TU1031.8	<i>IDK</i> [®] TurbiFIT [®] (Hemoglobin)	11, 18

List of abbreviations

CLIA	Chemiluminescence immunoassay
EIA	Enzyme immunoassay
ELISA	Enzyme linked immunosorbent assay
LC-MS	Liquid chromatography mass spectrometry
MTP	Microtiter plate
PETIA	Particle-enhanced turbidimetric immunoassay
REA	Radio extraction assay
UV	UV / Vis-Detection

Service

Analysis and Development:

- Development of mono- and polyclonal antibodies
- Production of mono- and polyclonal antibodies
- Development of assays on request
- Assay improvement
- Analysis of samples

Labelling Service:

- Luminescence-Labelling
- Biotin-Labelling
- Other Labellings on request

Ordering information

Product Certification

Immundiagnostik AG is DIN EN ISO 13485 certified.

We develop, produce and sell our kits in accordance with the IVD guidelines 98/79/EC

Required Form of Orders

- Name of Institution / Name of Company
- Delivery Address
- Invoice Address
- Purchase Order / Number
- Name of Contact Person
- Product Catalog Number, Name of Product
- VAT (Only for EU member states)

Orders can be placed by fax or e-mail:

Immundiagnostik AG
Stubenwald-Allee 8a
64625 Bensheim
Germany
Phone: +49 6251 70190-0
Fax: +49 6251 70190-363
E-mail: export@immundiagnostik.com

Prices and Payment Terms

Catalogues become effective after publication and replace all former editions.

Terms of payment: 30 days net.

Discounts

Please inquire about our standing order and quantity discount policies.

Shipping

All shipments are ex works Bensheim, Germany. If customers supply us with their forwarder account information, we will try to ship using the forwarder of choice. Please ask about shipping charges when you order.

Returns

We will only accept returns after we have given prior authorization and issued specific shipping instructions.

Claims for lost or damaged shipments

Please inspect packages immediately on receipt and inform our Export Dept. within 48 hours of receipt.

Warranty

All products supplied by Immundiagnostik are warranted to meet or exceed our published specifications when used under normal conditions in your laboratory.

Immundiagnostik must be notified of any breach of this warranty within 48 hours of receipt of the product. Our obligation and sole remedy is limited to such replacement of the product or full credit of original purchase price in the event the product proves to be defective. In particular, Immundiagnostik does not make any warranty of suitability, non-infringement, merchantability, or fitness for any particular purpose of any product.

Technical Service

Technical Service on any of our products is available by calling +49 6251 70190-0, sending a fax to +49 6251 70190-363 or e-mail to export@immundiagnostik.com

Immundiagnostik AG

Stubenwald-Allee 8a
64625 Bensheim, Germany
Phone: +49 6251 70190-0
Fax: +49 6251 70190-363
info@immundiagnostik.com
www.immundiagnostik.com

immun
Diagnostik

